

Supplementary File

Tables: Absolute radiographic scores (Larsen for FIN-RACO and Sharp-van der Heijde for NEO-RACO) were compared (predicted vs. observed) instead of the percent change from predicted, performed either on all patients or with a subdivision based on rheumatoid factor (RF). Predicted slopes of RF-positive or negative were also compared with one another.

Supplementary Table IV A. Predicted versus observed scores from the FIN-RACO trial.

Radiographic Outcomes	Single (n=72)			Combo (n=72)		
	Predicted	Observed	p-value ¹	Predicted	Observed	p-value ¹
2 years*	10.0 (6.25, 35.5)	14.5 (5.0, 23.0)	p=0.210	9.0 (7.0, 22.5)	5.0 (1.0, 16.5)	p<0.001
5 years**	22.0 (13.25, 70.5)	25.0 (11.5, 34.5)	p=0.040	21.0 (13.75, 48.0)	12.0 (3.25, 27.3)	p<0.001

Combo: combination arm, intention-to-treat, **Single:** monotherapy arm, intention-to-treat; ¹ Mann-Whitney U-test. All outcomes were reported as the median, followed by the interquartile range in parentheses: the predicted or observed Larsen radiographic score at BL, 2, and 5 years, respectively. ‡ Treatments in all groups became unrestricted after 2 years.

Supplementary Table IV A2. Predicted and observed scores from the FIN-RACO trial, divided by rheumatoid factor.

Outcomes	Rheumatoid factor (+) (n=102)			Rheumatoid factor (-) (n=42)		
	Predicted	Observed	p-value ²	Predicted	Observed	p-value ²
Baseline Erosions [†]		55 (53.9%)		18 (42.9%)		p=0.227 ¹
Radiograph Baseline*		3.0 (1.0, 7.0)		1.0 (1.0, 7.0)		p=0.291 ²
Radiograph 2 years*		12.0 (3.8, 19.3)		4.0 (1.0, 17.5)		p=0.022²
Predicted 2 years*		9.0 (7.0, 27.3)		9.0 (6.0, 24.5)		p=0.464 ²
Radiograph 5 years**		21.0 (9.0, 32.3)		11.0 (1.0, 22.8)		p=0.002²
Predicted 5 years**		28.0 (16.0, 57.0)		21.0 (13.0, 48.3)		p=0.519 ²
2 years*	9.0 (7.0, 27.3)	12.0 (3.75, 19.3)	p=0.021	9.0 (6.0, 24.5)	4.0 (1.0, 17.5)	p<0.001
5 years**	21.0 (16.0, 57.3)	21.0 (9.0, 32.3)	p=0.004	21.0 (13.0, 48.3)	11.0 (1.0, 22.8)	p<0.001

Combo: combination arm, intention-to-treat, **Single:** monotherapy arm, intention-to-treat; ¹Chi-Square; ²Mann-Whitney U-test. All the following outcomes were reported as the median, followed by the interquartile range in parentheses: *the observed or predicted Larsen radiographic score at baseline (BL), 2, and 5 years, respectively. [†]BL erosions were reported as proportions (count, %). [‡]Treatments in all groups became unrestricted after 2 years.

Predicted vs. observed progression in early RA / A. Levitsky et al.

Supplementary Table IV B. Predicted versus observed scores from the NEO-RACO trial.

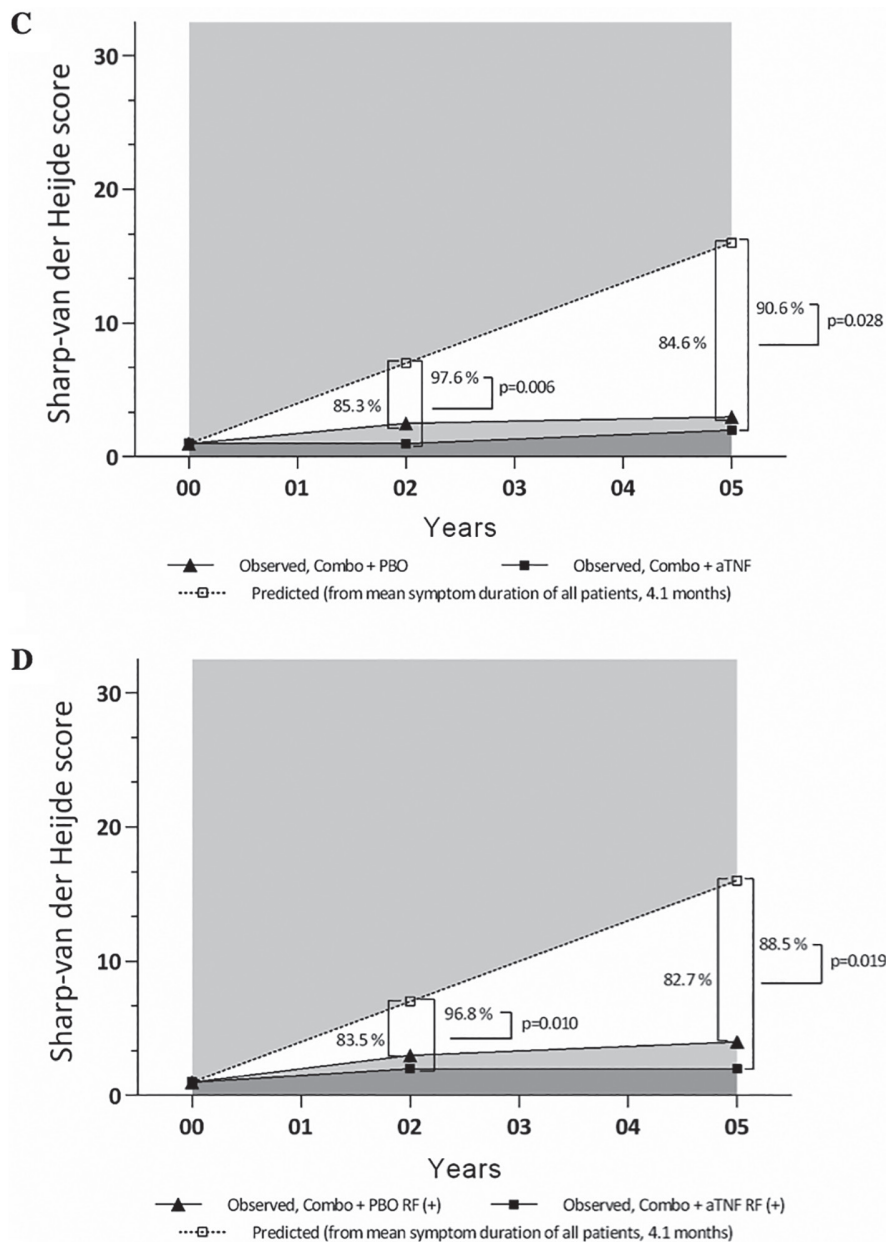
Radiographic Outcomes	Combo + aTNF (n=44)			Combo + PBO (n=46)		
	Predicted	Observed	<i>p</i> -value ¹	Predicted	Observed	<i>p</i> -value ¹
2 years*	13.5 (7.3, 26.5)	1.0 (1.0, 4.0)	<i>p</i><0.001	9.5 (7.0, 25.8)	2.5 (1.0, 5.3)	<i>p</i><0.001
5 years*‡	31.5 (16.3, 62.5)	2.0 (1.0, 5.8)	<i>p</i><0.001	21.5 (16.0, 61.8)	3.0 (1.0, 9.0)	<i>p</i><0.001

Combo + aTNF: combination + anti-TNF arm, intention-to-treat, **Combo + PBO:** combination + placebo arm, intention-to-treat. ¹Mann-Whitney U-test. All outcomes were reported as the median, followed by the interquartile range in parentheses: the predicted or observed Sharp-van der Heijde radiographic score at BL, 2, and 5 years, respectively. [‡]Treatments in all groups became unrestricted after 2 years.

Supplementary Table IV B2. Predicted and observed scores from the NEO-RACO trial, divided by rheumatoid factor.

Outcomes	Rheumatoid factor (+) (n=67)			Rheumatoid factor (-) (n=23)		
	Predicted	Observed	<i>p</i> -value ²	Predicted	Observed	<i>p</i> -value ²
Baseline Erosions [†]	29 (43.3%)	8 (34.8%)	<i>p</i> =0.475 ¹			
Radiograph Baseline*	1.0 (1.0, 4.0)	1.0 (1.0, 2.0)	<i>p</i> =0.258 ²			
Radiograph 2 years*	2.0 (1.0, 5.0)	1.0 (1.0, 3.0)	<i>p</i>=0.052²			
Predicted 2 years*	13.0 (7.0, 28.0)	10.0 (7.0, 25.0)	<i>p</i> =0.571 ²			
Radiograph 5 years*‡	3.0 (1.0, 9.0)	1.0 (1.0, 4.0)	<i>p</i>=0.046²			
Predicted 5 years*‡	31.0 (16.0, 64.0)	22.0 (16.0, 61.0)	<i>p</i> =0.575 ²			
2 years*	13.0 (7.0, 28.0)	2.0 (1.0, 5.0)	<i>p</i><0.001	10.0 (7.0, 25.0)	1.0 (1.0, 3.0)	<i>p</i><0.001
5 years*‡	31.0 (16.0, 64.0)	3.0 (1.0, 9.0)	<i>p</i><0.001	22.0 (16.0, 61.0)	1.0 (1.0, 4.0)	<i>p</i><0.001

Combo + aTNF: combination + anti-TNF arm, intention-to-treat, **Combo + PBO:** combination + placebo arm, intention-to-treat; ¹Chi-Square; ²Mann-Whitney U-test. All the following outcomes were reported as the median, followed by the interquartile range in parentheses: *the observed or predicted Sharp-van der Heijde radiographic score at baseline (BL), 2, and 5 years, respectively. [†]BL erosions were reported as proportions (count, %). [‡]Treatments in all groups became unrestricted after 2 years.



Supplementary Fig. 2. Results from the NEO-RACO trial.

C. All patients. **D.** Patients rheumatoid factor (RF) positive.

As a final sensitivity analysis, all patients (**C**) or RF-positive patients (**D**) had predicted progression simulated based on the mean symptom duration of all patients (4.1 months).