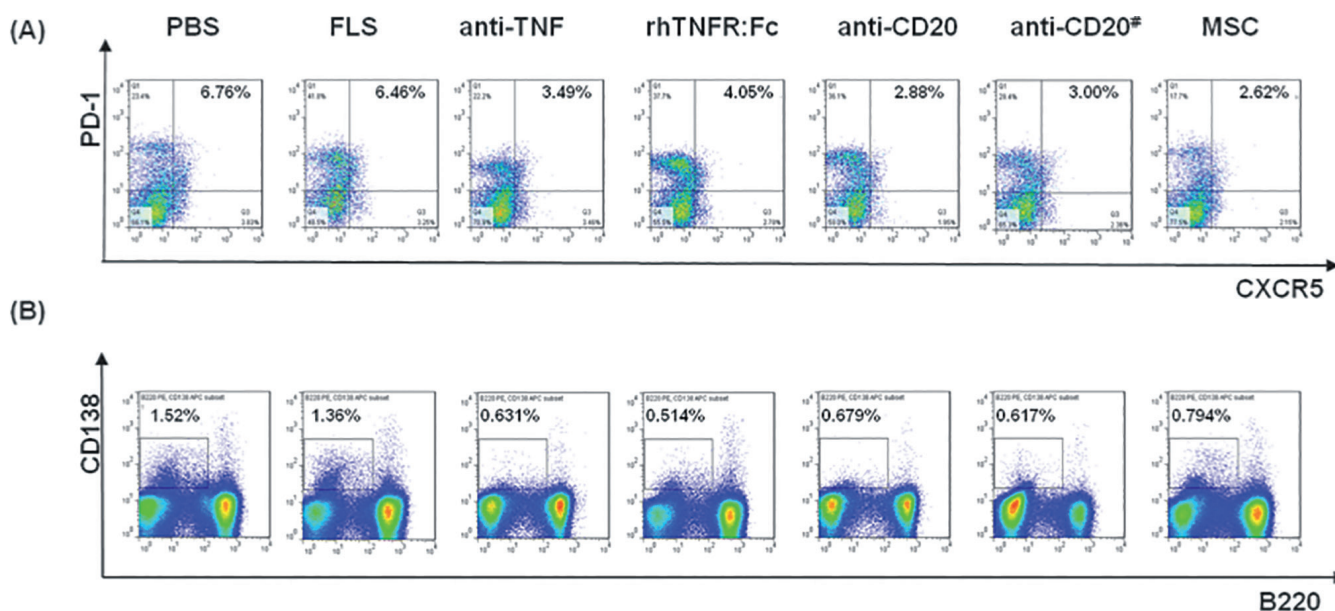


Fig. S1. The percentages of CD4<sup>+</sup> T cell subsets in spleen of different CIA groups. Th1 cells (A), Th17 cells (B), Th2 cells (C) and Treg cells (D).



**Fig. S2.** The percentages of T follicular (Tfh) cells and B cell subsets in different CIA groups. Tfh cells (A) and B cells (B).

**Fig. S3.** Concentrations of IL-1 $\beta$  (A), IL-6 (B), IL-10 (C), IL-17 (D), and TNF $\alpha$  (E) in supernatants of CII stimulated CD4<sup>+</sup> T lymphocytes *in vitro*. Isolated CD4<sup>+</sup> T cells from CIA mice were stimulated by CII in the presence or absence of MSC (MSC: CD4<sup>+</sup> T cells=1:10). After 72 hours, cytokine levels in supernatants were assessed by Luminex 200<sup>TM</sup> system (n=5). \**p*<0.05.

