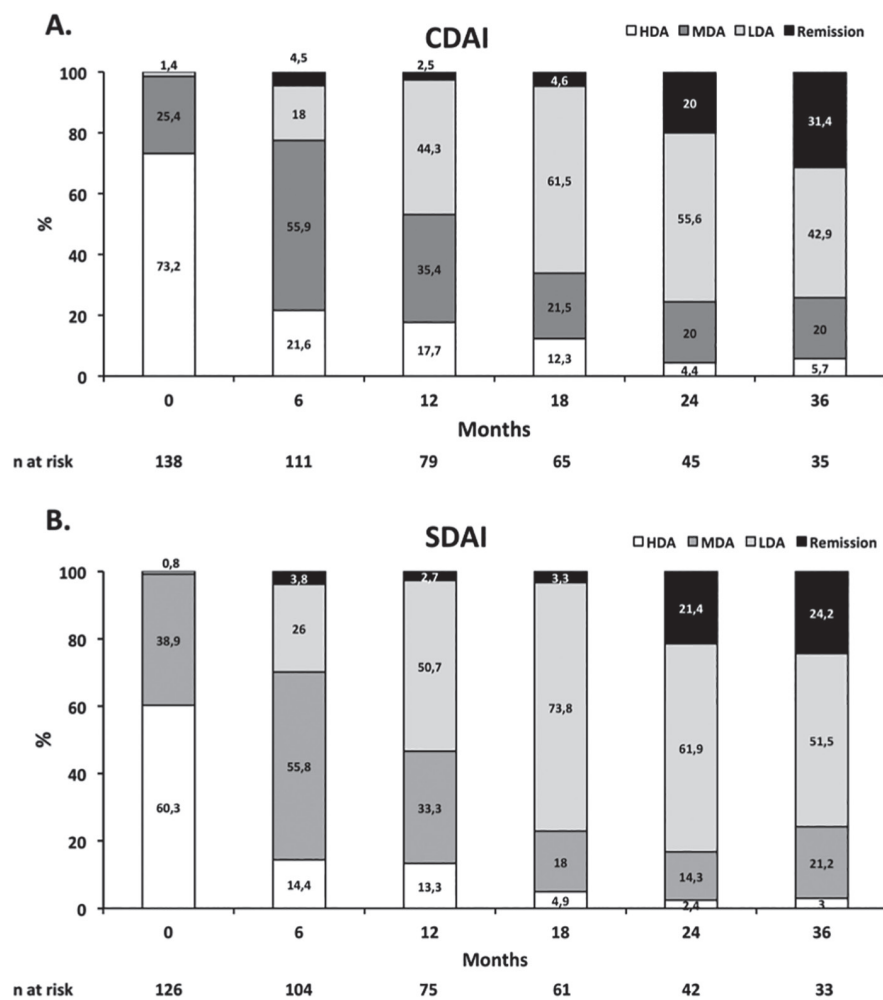


**Supplementary Table I.** The changes in Clinical Disease Activity Index (CDAI, A.) and Simple Disease Activity Index (SDAI, B.) scores during treatment in patients with rheumatoid arthritis at different time points are depicted.



HDA: High disease activity (SDAI: >26, CDAI: >22), MDA: Moderate disease activity (SDAI: >11 to ≤26, CDAI: >10 to ≤22), LDA: Low disease activity (SDAI: >3.3 to ≤11, CDAI: >2.8 to ≤10), remission (SDAI: ≤3.3, CDAI: ≤2.8)

**Supplementary Table II.** Estimated drug survival based on Kaplan-Meier analysis at different time points in the total patient population (n=328) as well as in different diagnoses.

	Follow-up time (months)			
	6	12	24	36
Diagnosis (n)				
Total (n=328)	93	80	68	62
RA (n=166)	93	82	69	60
PsA (n=82)	89	70	58	53
AS (n=80)	97	84	79	76

RA: rheumatoid arthritis; PsA: psoriatic arthritis; AS: ankylosing spondylitis.