

Supplementary file

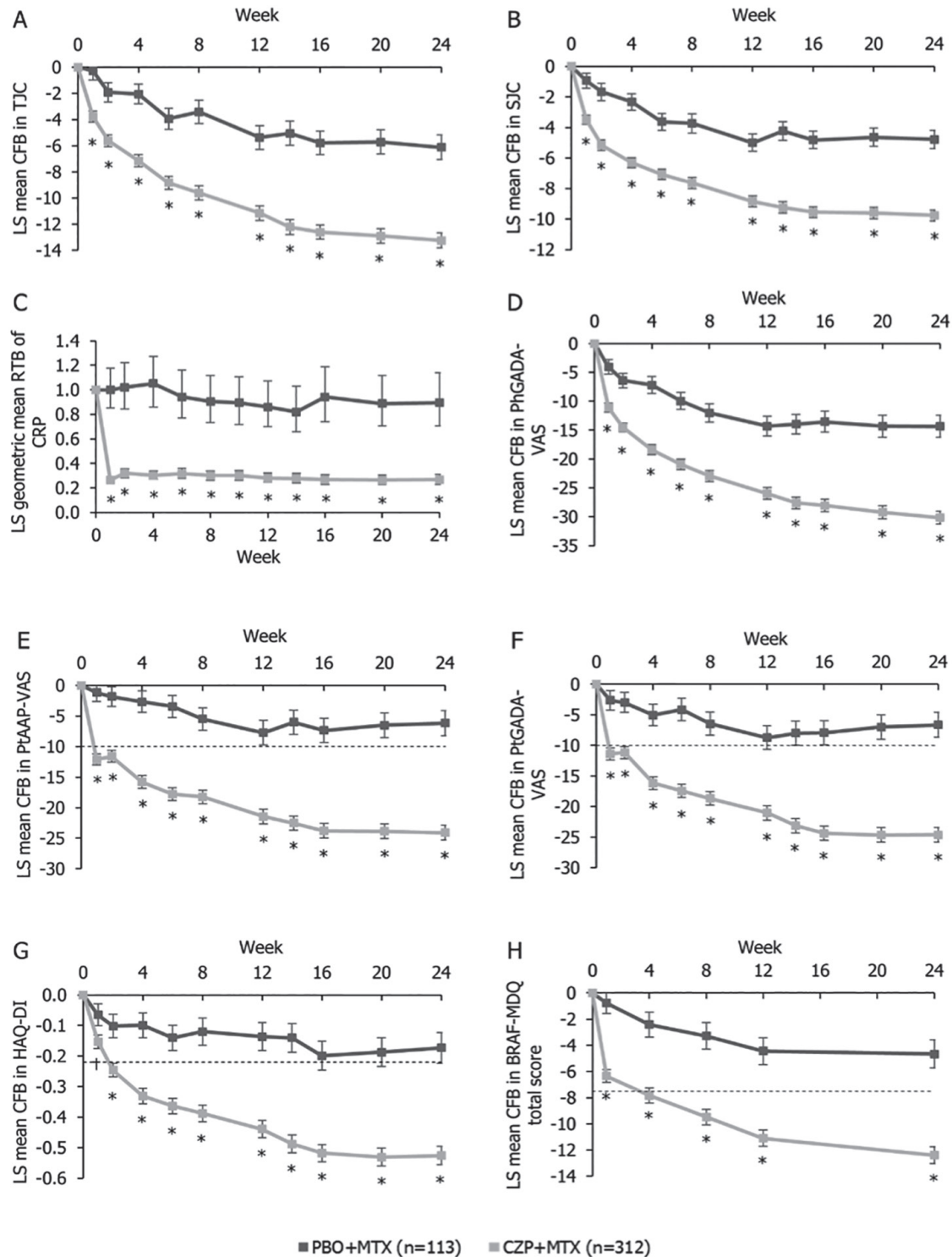


Fig. S1. Improvements over time in ACR core components (A-G) and fatigue (H) (FAS population, LOCF). † $p < 0.05$ vs. PBO+MTX; * $p < 0.001$ vs. PBO+MTX; analysed using an analysis of covariance (ANCOVA) model with treatment and region as factors and baseline value as a covariate for (A-B, G), an ANCOVA model with treatment as a factor and baseline value as a covariate for (D-F, H), a log-transformed ANCOVA model with treatment and site as factors and the log-transformed baseline value as a covariate for (C). All p -values are nominal. Dashed lines in (E-H) indicate values of minimum clinically important difference (MCID; PtAAP-VAS: ≥ 10 mm; PtGADA-VAS: ≥ 10 mm; HAQ-DI: ≥ 0.22 ; BRAF-MDQ total score: ≥ 7.5). Error bars represent 95% CIs in (C), and standard error in all the other panels. CFB, change from baseline; LS, least squares; RTB, ratio to baseline.