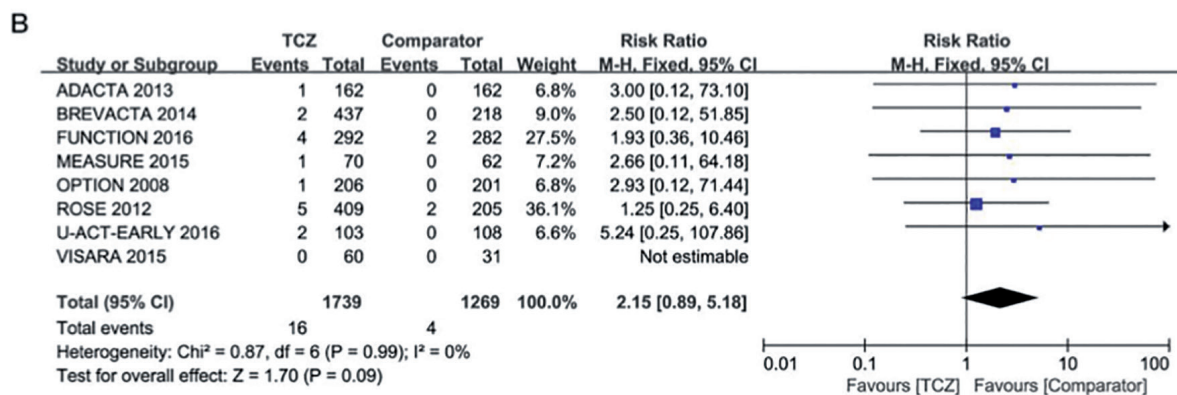
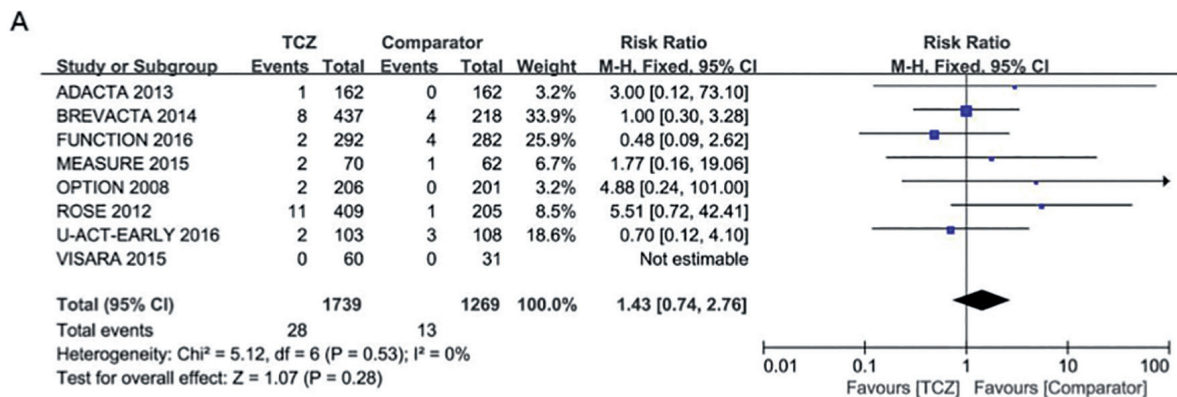
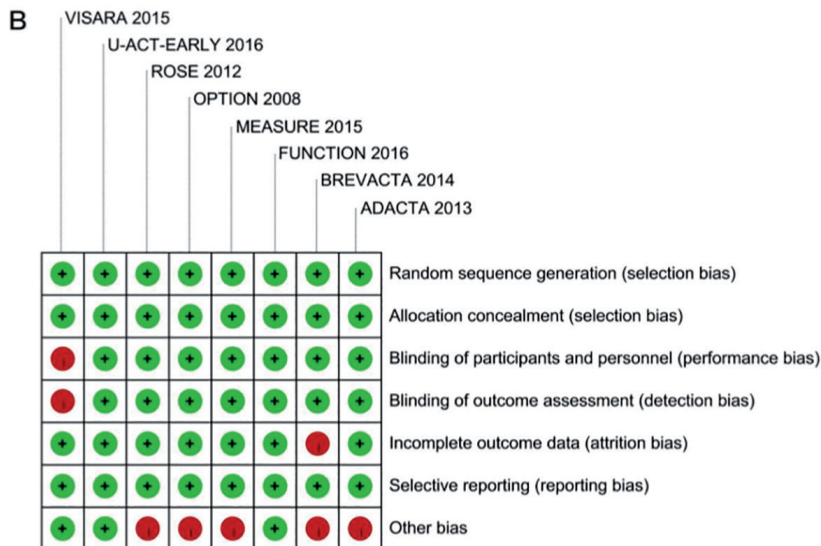
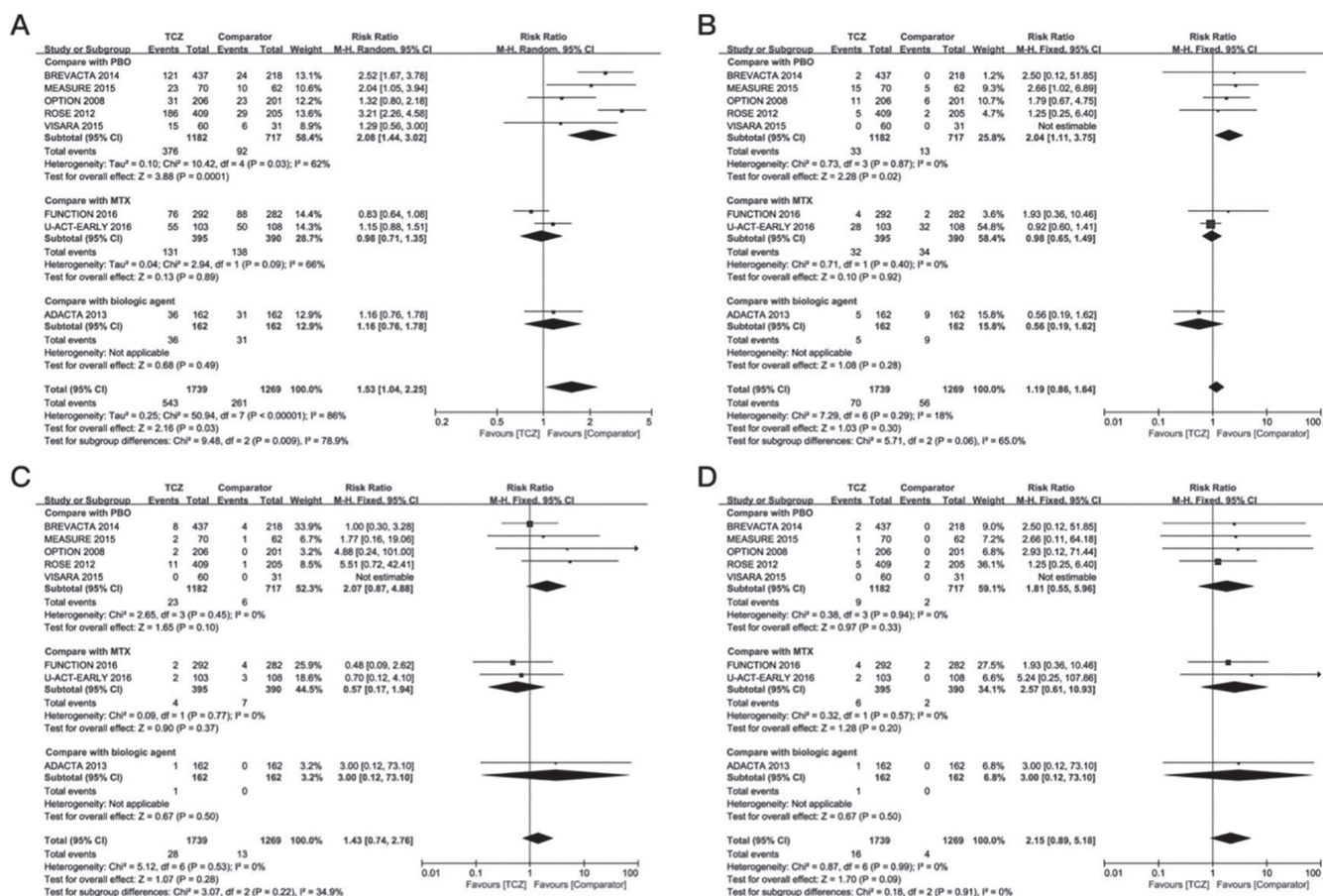


Supplementary Fig. 1.

Risk of bias graph (A) and summary (B).

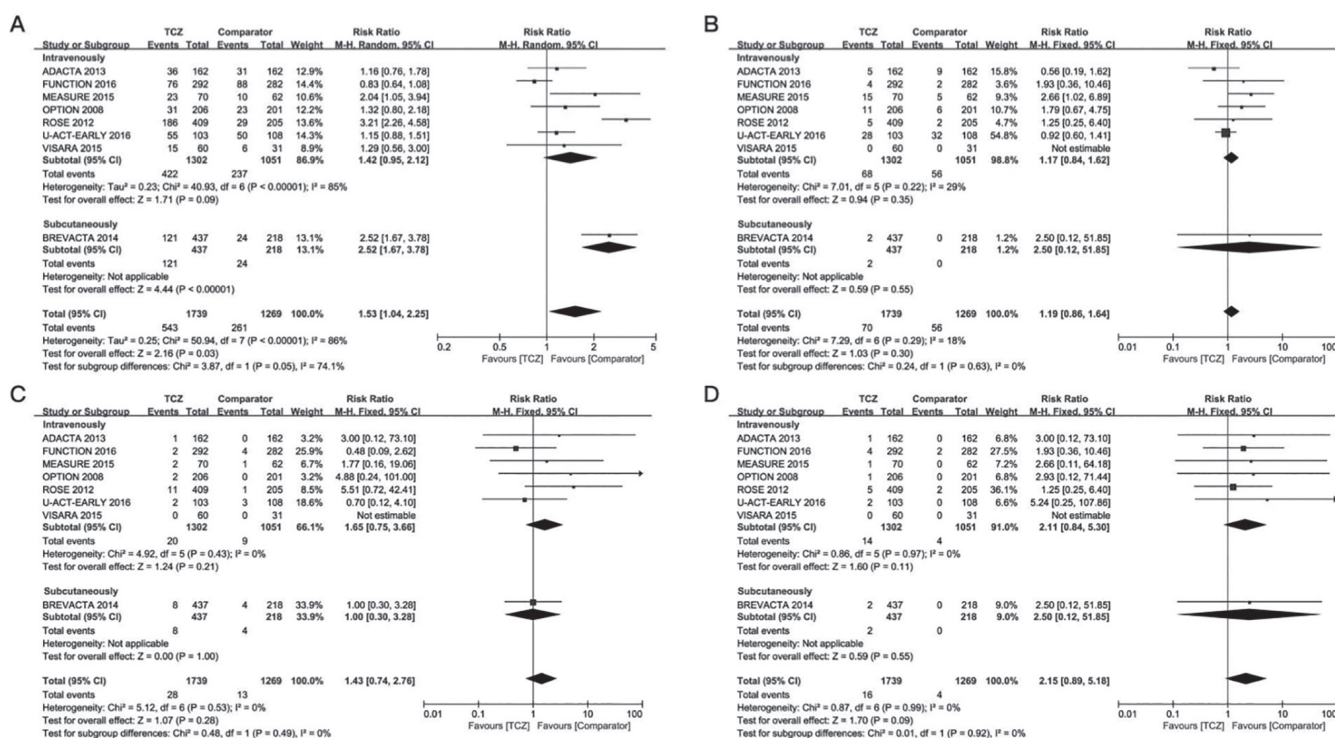


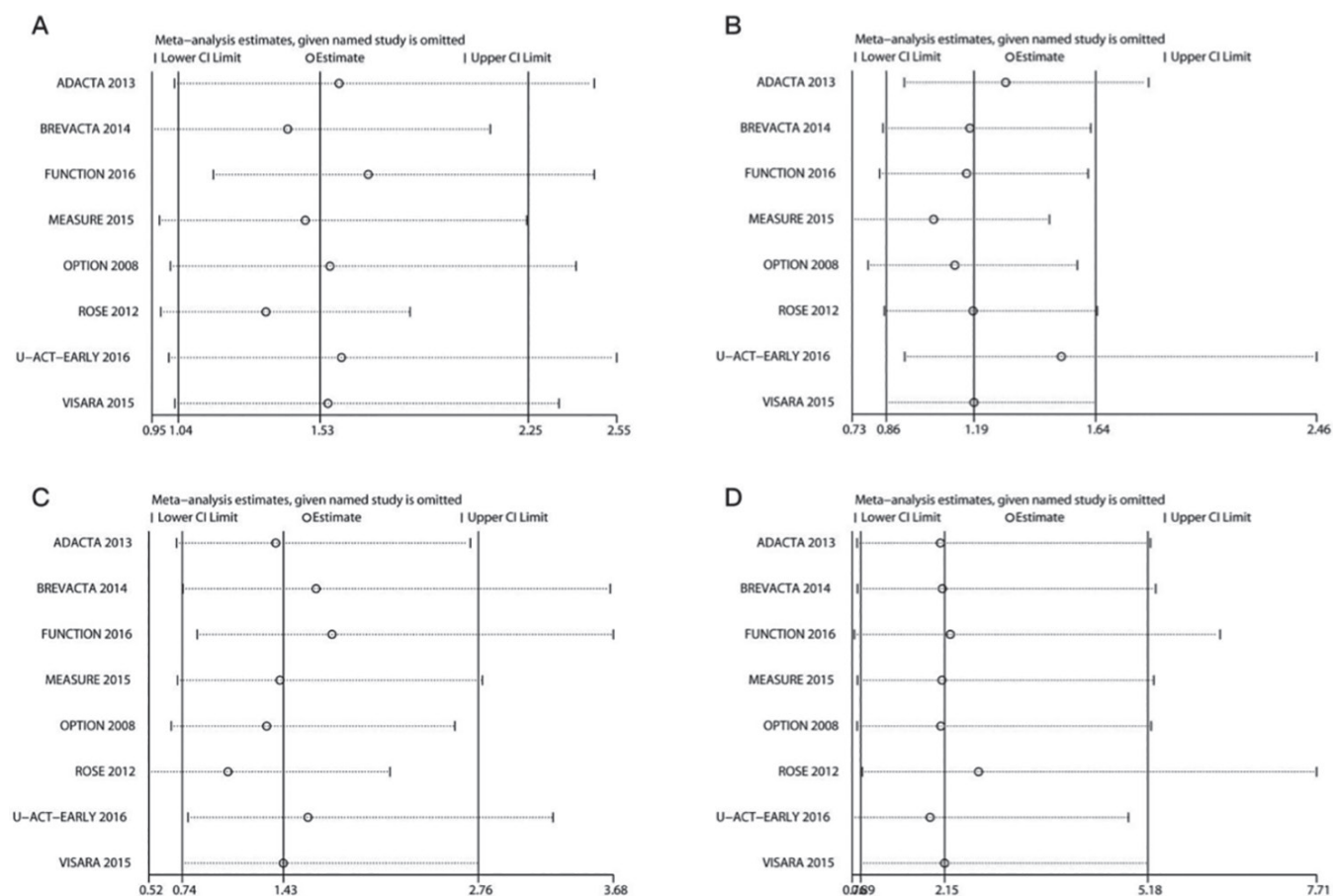
Supplementary Fig. 2. Relative risks of infectious (A) and non-infectious (B) respiratory SAEs for tocilizumab compared with comparator agents.



Supplementary Fig. 3. Subgroup analyses performed according to the administration of different comparator agents.

Relative risks of infectious and non-infectious AEs (A and B) and SAEs (C and D) for tocilizumab compared with comparator agents.





Supplementary Fig. 5. Sensitivity analysis performed using STATA software. The exclusion of any single trial had little effect on the pooled results of relative risks of infectious or non-infectious respiratory AEs (**A** and **B**) and SAEs (**C** and **D**) for tocilizumab compared with comparator agents.