

Fig. 1. The purity of CD4⁺ T cells.

Fig. 2. The characteristics of RA and OA patients.

	Diagnosis	CRP (mg/L)	ESR (mm/h)	ACPA (RU/ml)	DAS28	Passages
Patient 1	RA	29.7	60	800.39	5.39	P3-P8
Patient 2	RA	14.6	20	600.24	5.13	P3-P8
Patient 3	RA	35.5	25	133.5	4.2	P3-P8
Patient 4	OA	5.3	18	24	-	P3-P8
Patient 5	OA	7.0	20	15	-	P3-P8
Patient 6	OA	4.2	10	34	-	P3-P8

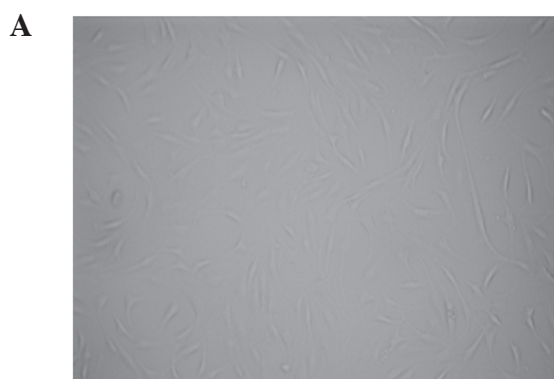
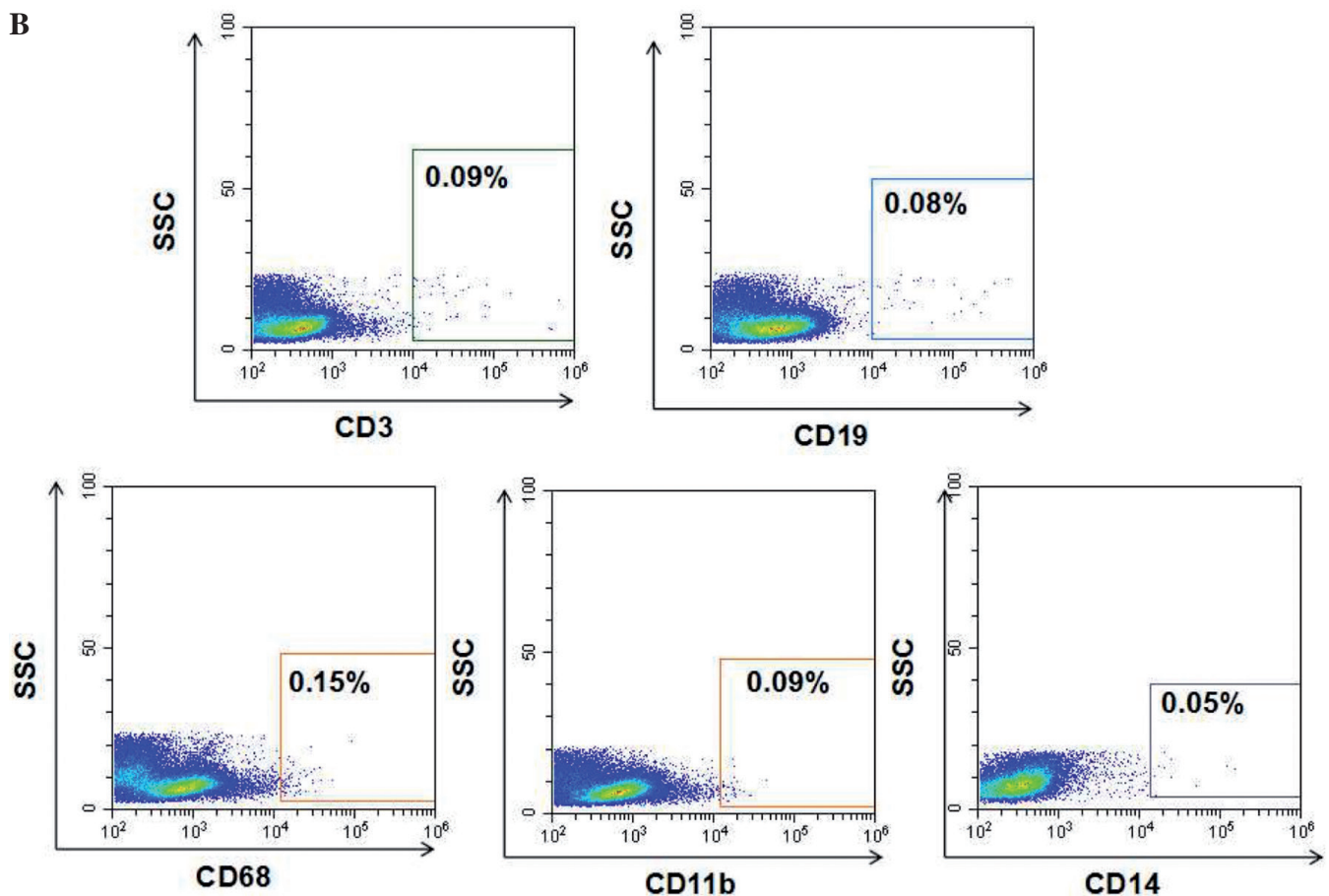


Fig. 3.

A: Appearance of RA FLSs at generation 4.

B: A homogeneous population (<1% CD3⁺, <1% CD19⁺, <1% CD68⁺, <1% CD11b⁺, and <1% CD14⁺) was identified as RA FLSs.



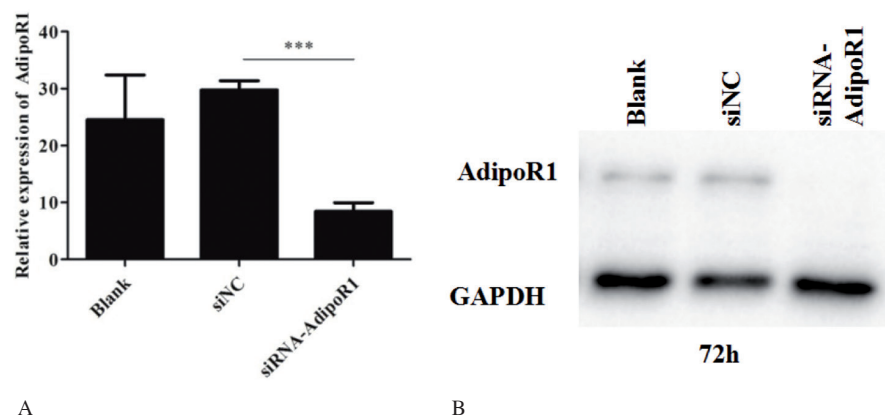


Fig. 4. A: AdipoR1 siRNA oligonucleotides were transfected into RA FLSs. Knockdown efficiency was monitored by RT-PCR at 48h after transfection.
B: Knockdown efficiency was monitored by western blot at 72h after transfection.