

Supplementary Table S1. Body composition measurements in the 120 patients.

Variables	Value
Waist perimeter, cm, mean (SD)	99.9 (13.2)
VAT, cm ² , mean (SD)	121.6 (74.3)
SAT, cm ² , mean (SD)	281.0 (129.8)
VAT/SAT ratio, %, mean (SD)	45.0 (21.8)
Fat mass, kilogram, mean (SD)	21.7 (8.9)
Fat mass distribution, %, mean (SD)	30.8 (9.1)
Appendicular lean, kilogram, mean (SD)	45.4 (10.0)

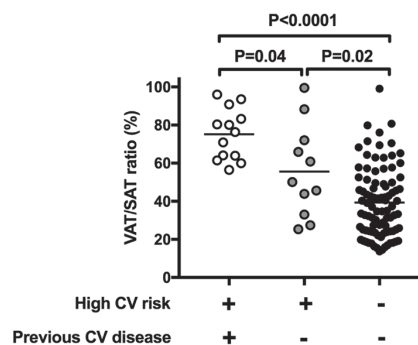
SD: standard deviation; VAT: visceral adipose tissue; SAT: subcutaneous adipose tissue.

Supplementary Table S2. Variables associated with high tertile of VAT/SAT (*i.e.* >34.7%) in women.

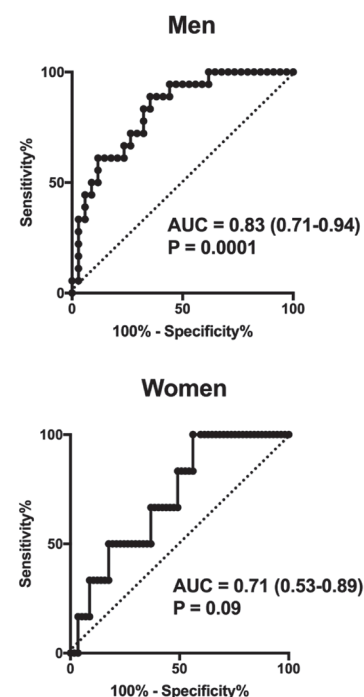
Variables	OR (CI 95%)	<i>p</i> -value
Age (years)	1.052 [1.016 – 1.090]	0.005
Disease duration	1.002 [0.996 – 1.009]	0.42
Cumulative dose of glucocorticoids	1.261 [0.762 – 2.089]	0.37
BVAS score	0.947 [0.873 – 1.026]	0.18
VDI score	1.608 [1.069 – 2.417]	0.02
CRP	1.014 [0.981 – 1.048]	0.42
Troponin	1.048 [0.974 – 1.127]	0.21
ANCA-PR3	1.108 [0.332 – 3.703]	0.87
ANCA-MPO	0.950 [0.254 – 3.551]	0.83
BMI (kg/m ²)	1.263 [1.092 – 1.462]	0.002
Hypertension	3.111 [1.062 – 9.113]	0.039
Total cholesterol	1.338 [0.499 – 3.589]	0.56
LDL cholesterol	1.698 [0.444 – 6.493]	0.44
Triglycerides	2.062 [0.722 – 5.888]	0.18
Current smoking	0.603 [0.059 – 6.170]	0.67
Diabetes	0.929 [0.080 – 10.856]	0.95
Previous history of CV disease	>999.99 [0.001 – >999.99]	0.98
HbA1c	10.714 [1.835 – 62.571]	0.008
HDL cholesterol	0.776 [0.139 – 4.351]	0.77

Supplementary Table S3. Variables associated with high tertile of VAT/SAT (*i.e.* >65.2%) in men.

Variables	OR (CI 95%)	<i>p</i> -value
Age (years)	1.116 [1.052 – 1.185]	0.0003
Disease duration	1.004 [0.997 – 1.011]	0.26
Cumulative dose of glucocorticoids	0.984 [0.529 – 1.832]	0.96
BVAS score	1.086 [1.002 – 1.177]	0.045
VDI score	1.397 [1.065 – 1.833]	0.016
CRP	1.003 [0.979 – 1.026]	0.82
Troponin	1.105 [1.025 – 1.193]	0.0097
ANCA-PR3	0.458 [0.125 – 1.678]	0.29
ANCA-MPO	0.825 [0.151 – 4.500]	0.81
BMI (kg/m ²) (mean ±SD)	0.975 [0.868 – 1.096]	0.67
Hypertension	2.881 [0.885 – 9.377]	0.079
Total cholesterol	0.730 [0.230 – 2.312]	0.59
LDL cholesterol	0.594 [0.170 – 2.080]	0.42
Triglycerides	2.439 [1.009 – 5.896]	0.048
Current smoking	0.341 [0.037 – 3.170]	0.34
Diabetes	9.428 [0.966 – 92.049]	0.05
Previous history of CV disease	4.640 [1.229 – 17.519]	0.02
HbA1c	1.770 [0.646 – 4.851]	0.27
HDL cholesterol	0.184 [0.013 – 2.589]	0.21



Supplementary Fig. 1. VAT/SAT ratio according to the presence of high cardiovascular risk or previous cardiovascular disease.



Supplementary Fig. 2. Receiver operating characteristic (ROC) curve analysis. ROC curves show that AUC of VAT/SAT ratio for identification of high CV patients is statistically significant for men but not for women.