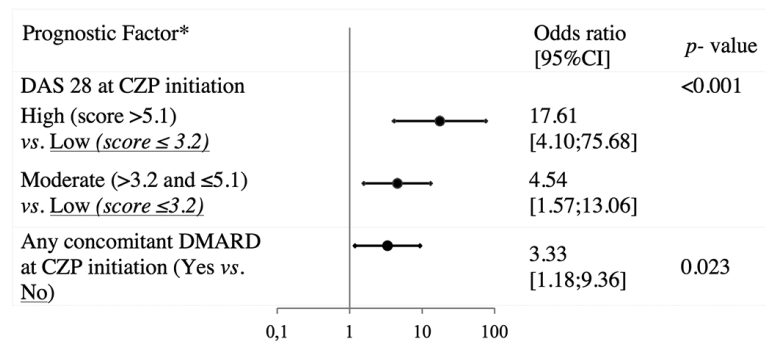


**Supplementary Figure S1.** Patient disposition.

Completers: patients treated with CZP at each time point; EULAR: European League Against Rheumatism; FAS: Full Analysis Set.

[a] 61/733 patients not documented; [b] 122/733 patients not documented; [c] 174/733 patients not documented; [d] 261/733 patients not documented; [e] 264/733 patients not documented; [f] 303/733 patients not documented. CZP: certolizumab pegol; CZP Completers: patients treated with CZP at each time point. The following time windows were applied for study visits: 3-month visit: from 1 to 4.5 months; 6-month visit: from 4.5 to 9 months; 12-month visit: from 9 to 15 months; 18-month visit: from 15 to 21 months; 24-month visit: from 21 to 30 months; 36-month visit: from 30 to 42 months.

**Supplementary Figure S2.** Prognostic factors of EULAR response at 12 months (12-MCS).



Model based on 290 observations.

12-MCS: 12-month completer set; CI: confidence interval; CZP: certolizumab pegol; DAS28: 28-joint disease activity score; DMARD: disease-modifying anti-rheumatic drug; EULAR: European League Against Rheumatism.

**Supplementary Table S1.** EULAR response definitions using the DAS28.

		Improvement in DAS28 from baseline		
		>1.2	>0.6 and ≤1.2	≤0.6
DAS28 at 12 months	Low (≤3.2)	Good	Moderate	None
	Moderate (>3.2 and ≤5.1)	Moderate	Moderate	None
	High (>5.1)	Moderate	None	None

DAS28: 28-joint disease activity score; EULAR: European League Against Rheumatism.

**Supplementary Table S2.** Health resource utilisation per year.

		Analysis population n=733		
		Year 1 n=545	Year 2 n=457	Year 3 n=219
HCP consultations related to RA	n (%)	243 (44.6)	184 (40.3)	82 (37.4)
Number of HCP consultations	Mean (SD)	2.3 (1.8)	2.4 (2.2)	2.3 (2.0)
Rheumatologist consultations related to RA	n (%)	165 (30.3)	133 (29.1)	70 (32.0)
Number of rheumatologist consultations	Mean (SD)	2.0 (1.5)	2.1 (2.1)	2.2 (2.0)
GP consultations related to RA	n (%)	80 (14.7)	54 (11.8)	14 (6.4)
Number of GP consultations	Mean (SD)	2.0 (1.7)	2.0 (1.7)	1.8 (1.1)
Medical procedures	n (%)	258 (47.3)	210 (46.0)	72 (32.9)
Number of medical procedures	Mean (SD)	1.9 (1.4)	2.1 (1.6)	2.4 (2.5)
MRI	n (%)	44 (8.1)	39 (8.5)	18 (8.2)
Number of MRI scans	Mean (SD)	1.1 (0.3)	1.1 (0.5)	1.2 (0.6)
CT scan	n (%)	54 (9.9)	38 (8.3)	17 (7.8)
Number of CT scans	Mean (SD)	1.2 (0.5)	1.3 (0.5)	1.2 (0.4)
Scintigraphy	n (%)	11 (2.0)	5 (1.1)	3 (1.4)
Number of scintigraphies	Mean (SD)	1.0 (0.0)	1.0 (0.0)	1.7 (1.2)
Ultrasound scan	n (%)	67 (12.3)	65 (14.2)	17 (7.8)
Number of ultrasound scans	Mean (SD)	1.2 (0.5)	1.2 (0.6)	1.3 (0.5)
Other medical procedures	n (%)	195 (35.8)	158 (34.6)	53 (24.2)
Number of other medical procedures	Mean (SD)	1.6 (1.1)	1.7 (1.2)	2.0 (2.2)
Hospitalisation (length of stay >1 day)	n (%)	71 (13.0)	46 (10.1)	25 (11.4)
Number of hospitalisations (length of stay >1 day)	Mean (SD)	1.2 (0.4)	1.1 (0.5)	1.4 (0.8)
Emergency room visits	n (%)	41 (7.5)	11 (2.4)	6 (2.7)
Number of emergency room visits	Mean (SD)	1.1 (0.3)	1.1 (0.3)	1.5 (1.2)

CT scan: computerised tomography scan; HCP: health care practitioner; GP: general practitioner; MRI: magnetic resonance imaging; RA: rheumatoid arthritis; SD: standard deviation.