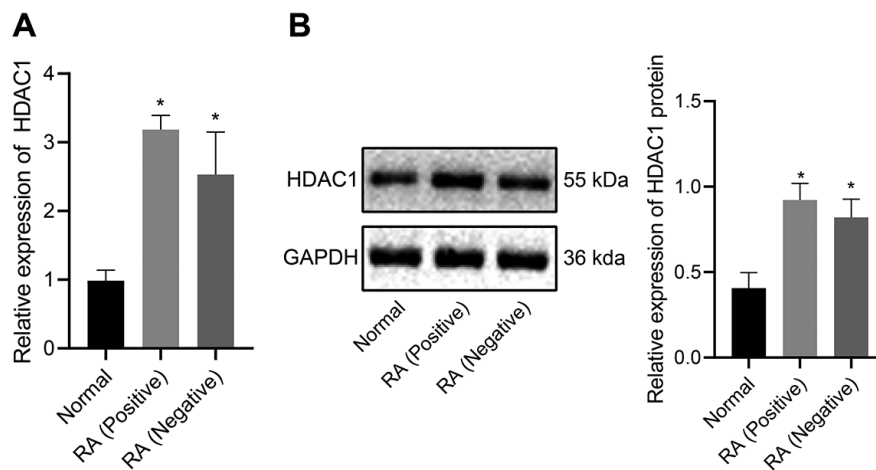


Supplementary Table S1. General patient information (n=39).

Patients	Rheumatoid arthritis (n=30)	Amputation due to trauma (n=4)	Requiring arthroscopic surgery (n=5)
Age in years, mean (SD)	52.77 (6.04)	52.50 (9.68)	50.20 (4.97)
Female, n (%)	13 (43)	2 (50)	2 (40)
Duration of rheumatoid arthritis (year), mean (SD)	5.91 (1.88)		
RF positive, n (%)	13 (43.33)		
Anti-CCP positive n (%)	12 (40)		
ESR (mm/hr), mean (SD)	71.30 (20.57)		
CRP (mg/l), mean (SD)	24.73 (11.15)		
DAS28-ESR, mean (SD)	6.02 (2.17)		
HAQ, mean (SD)	1.48 (0.79)		
NSAID, n (%)	20 (66.67)		
DMARD, n (%)	17 (56.67)		
Prednisolone, n (%)	8 (26.67)		

SD: standard deviation; RF: rheumatoid factor; Anti-CCP: anti-cyclic citrullinated peptide; ESR: erythrocyte sedimentation rate; CRP: C-reactive protein; DAS28-ESR: Disease Activity Score for 28-joint counts based on the ESR; HAQ: health assessment questionnaire; NSAID: non-steroidal anti-inflammatory drug; DMARD: disease-modifying anti-rheumatic drugs; mm: millimetre; hr: hour; mg: milligram; l: litre.

**Supplementary Fig. 1.** HDAC1 is upregulated in RF-negative as well as RF-positive patients with RA.

A: Expression of HDAC1 in synovial tissues from RF-positive RA patients (n=19), RF-negative RA patients (n=11) and healthy people (n=9) determined using RT-qPCR.

B: Protein bands of HDAC1 in synovial tissues from RF-positive RA patients (n=19), RF-negative RA patients (n=11), and healthy individuals (n=9) studied using Western blot analysis.