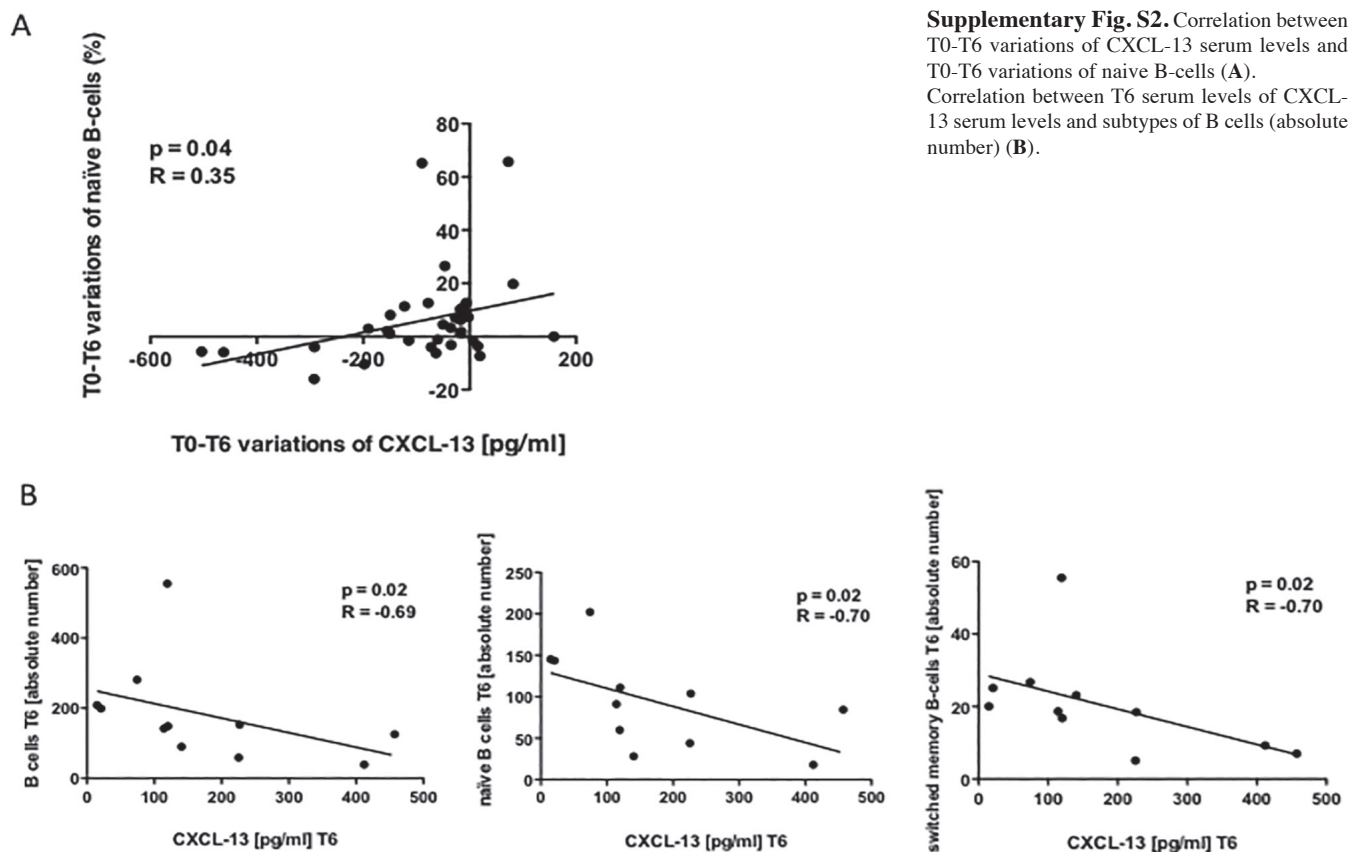


Supplementary Fig. S1. Representative flow cytometry gating strategy for the evaluation of circulating T Follicular Helper (cTFH) T-cells (A) and B-cells (B).

A: FSC and SSC were used to define the lymphocyte population. Analysis: TFH are gated as CD3+CD4+CXCR5+ICOS+ cells. At least 30.000 events were analysed for each sample.

B: FSC and SSC were used to define the lymphocyte population. Analysis: naive B-cells are gated as CD19+CD27-IgD+, switched memory B-cells as CD19+CD27+IgD- and unswitched memory B-cells as CD19+CD27+IgD+. At least 30.000 events were analysed for each sample.



Supplementary Fig. S2. Correlation between T0-T6 variations of CXCL-13 serum levels and T0-T6 variations of naive B-cells (A).

Correlation between CXCL-13 serum levels and subtypes of B cells (absolute number) (B).