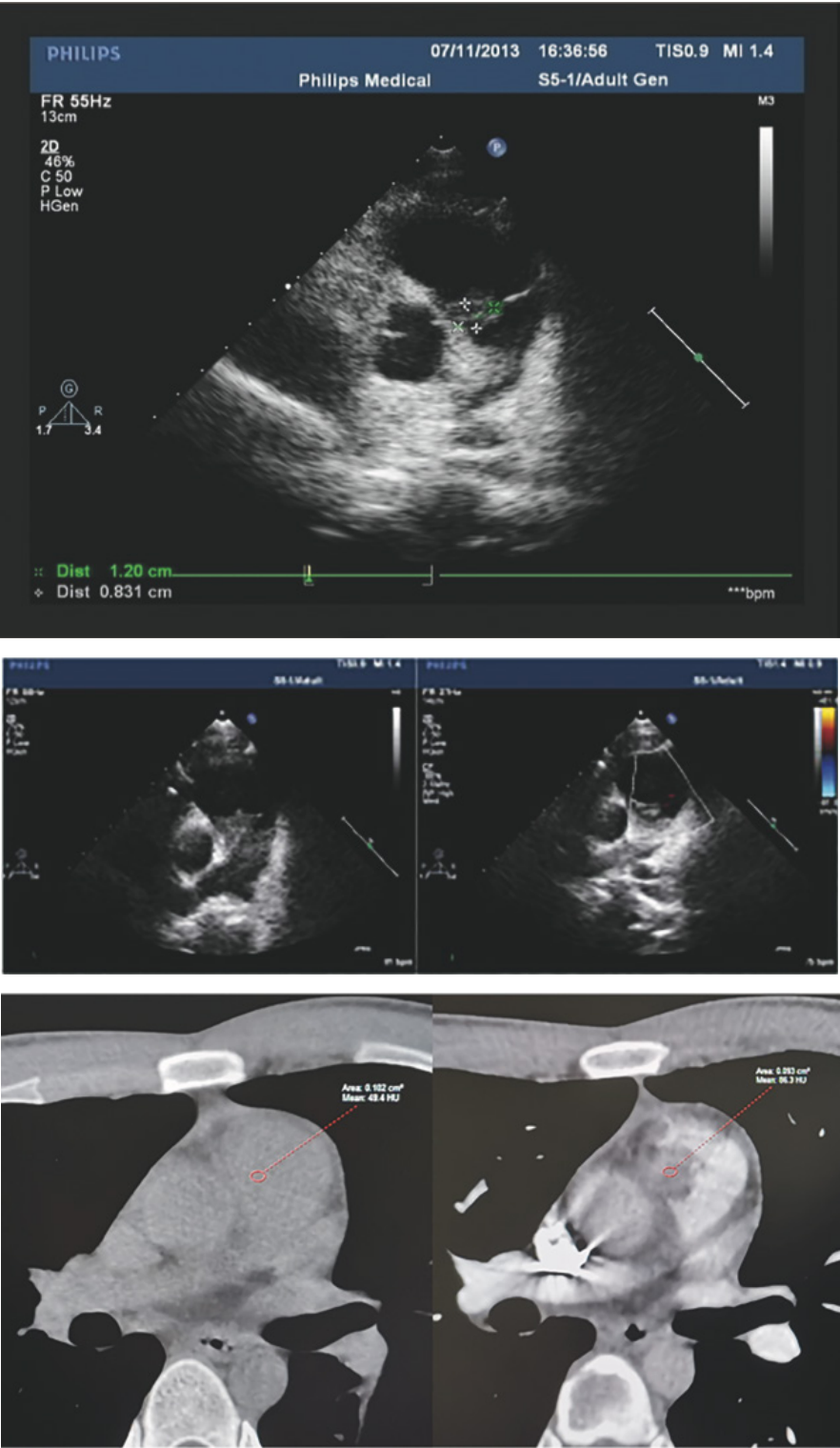
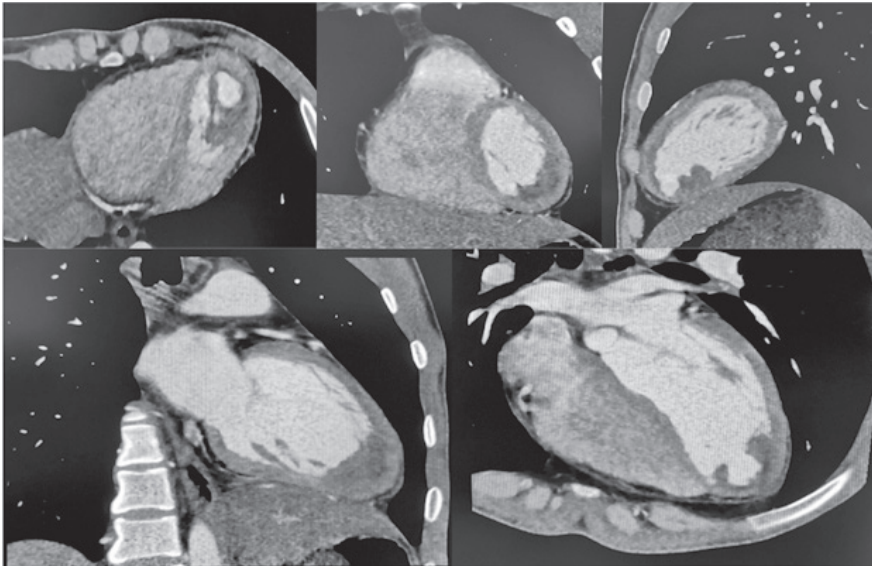


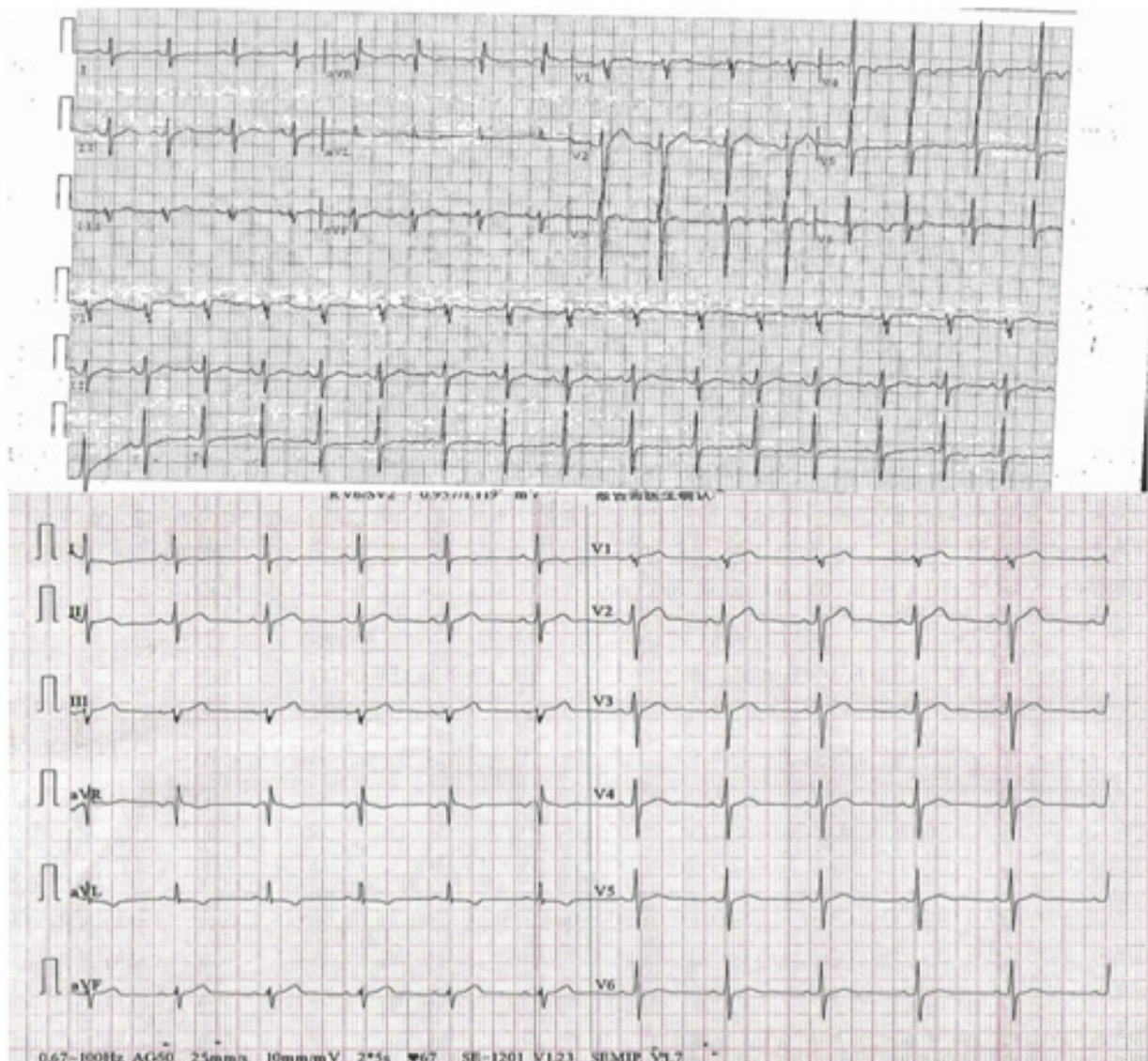
Supplementary Fig. S1. ECG showing ST segment depression and T wave invert on the inferior leads.



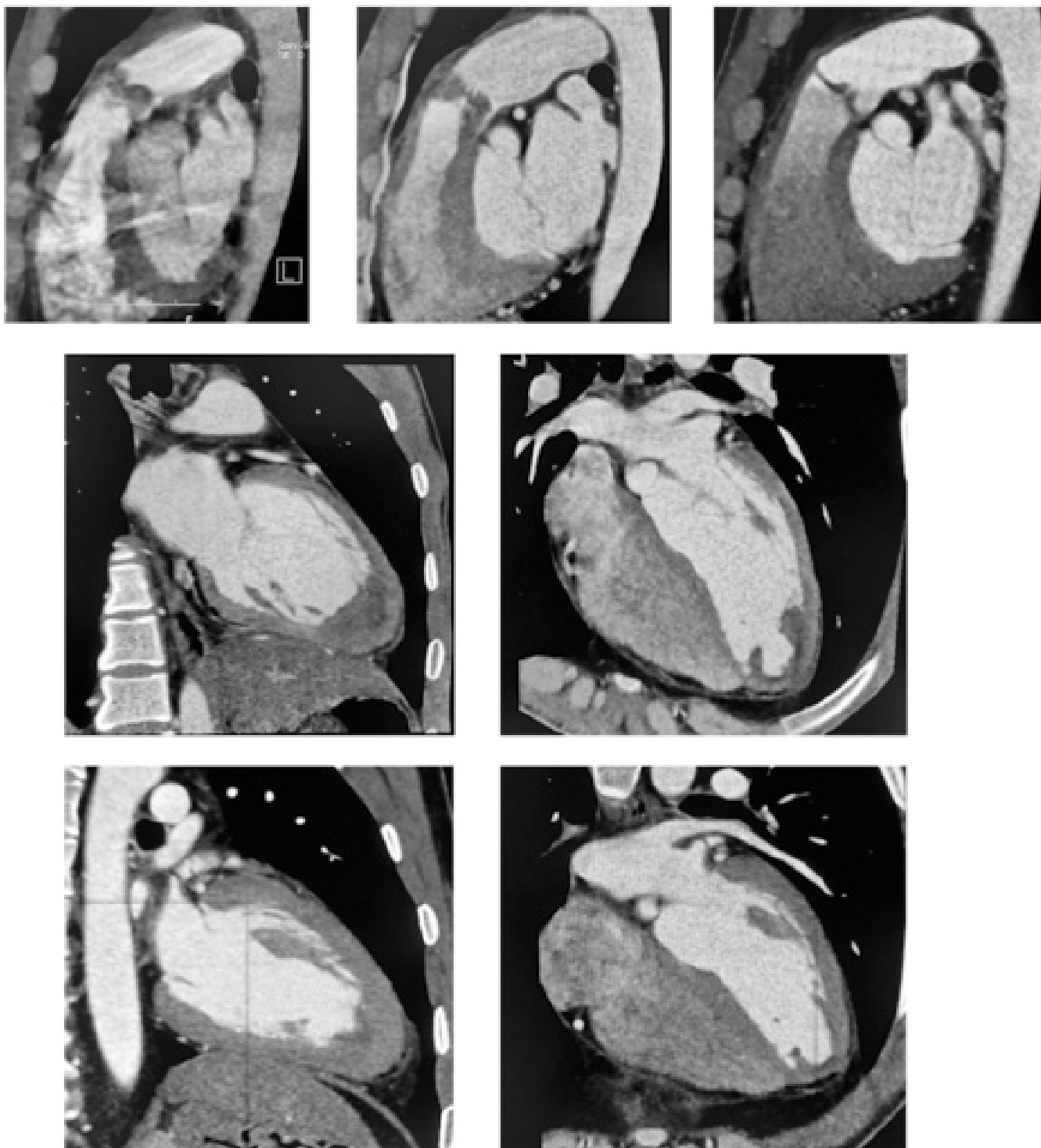
Supplementary Fig. S2. Pulmonary valve lesions detected via transthoracic echocardiography and CT scan.



Supplementary Fig. S3. Coronary CTA showing a thickened left ventricular endocardium and irregular filling defects in the left ventricle, particularly in the apex.



Supplementary Fig. S4. ECG changes after treatment.



Supplementary Fig. S5. CT scan showing irregular filling defects in the left ventricle, apex and pulmonary valve changes after treatment.
