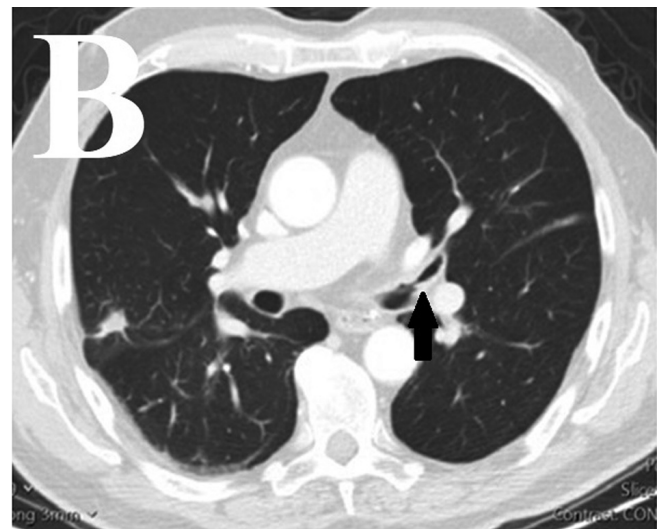
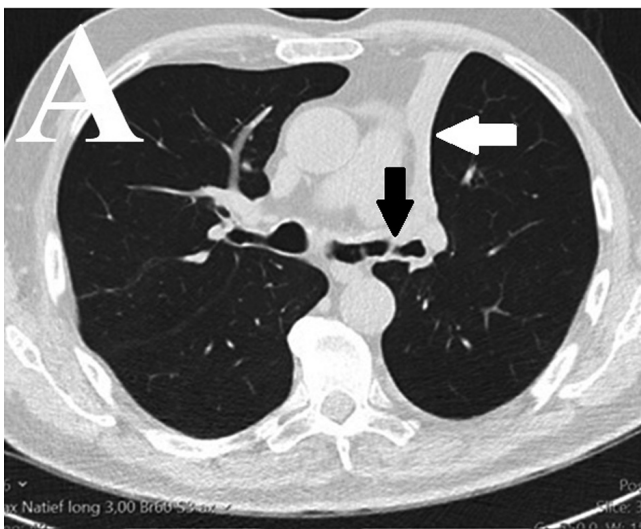


Supplementary Fig. S1. (A) Bronchoscopy showing extensive inflammation and ulcerative lesions (black arrows) of the upper trachea and the carina. (B) Haematoxylin and eosin staining images of the bronchus biopsy shows severe mucosal inflammation (black stars) (scale bar, 50 µm). (C) Note also the influx of eosinophils (black arrows) and inflammation of small blood vessels (black stars) (scale bar, 25 µm).



Supplementary Fig. S2. (A, B) Chest CT-scan made four months after diagnosis shows progression of the narrowing of the left main bronchus with stenosis of 75% caliber (black arrows) and atelectasis of the left upper lobe (white arrow).