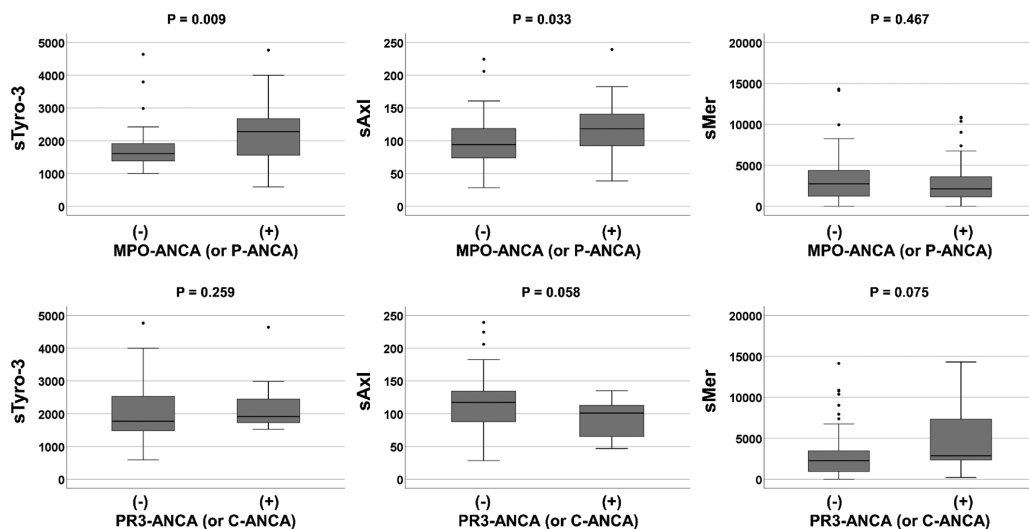
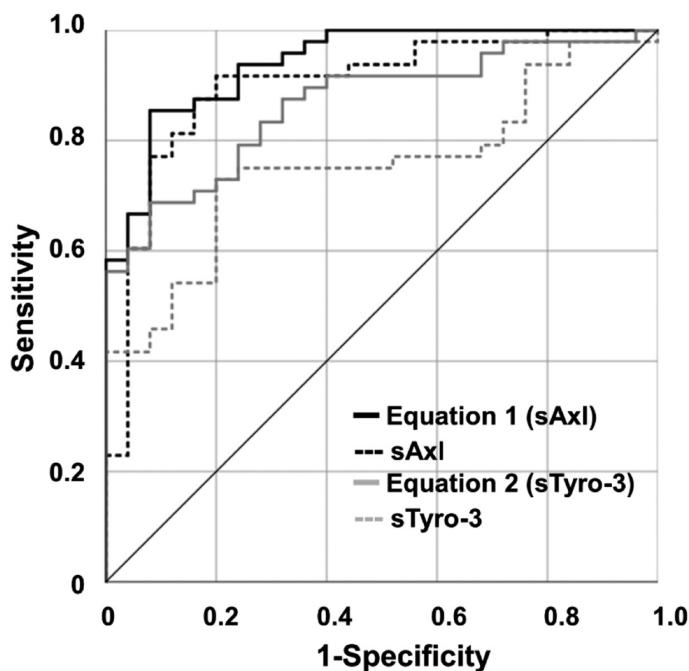


Supplementary Fig. S1. Comparison of the serum concentrations of sTyro, sAxl, and sMer between GPA and MPA patients. GPA: granulomatosis with polyangiitis; MPA: microscopic polyangiitis; NS: not significant.



Supplementary Fig. S2. Comparison of the serum concentrations of sTyro, sAxl, and sMer between patients with MPO-ANCA (or P-ANCA) or PR3-ANCA (C-ANCA) and those without.



Variables	Area	P-value	95% CI
Laboratory results			
Equation 1 (sAxl)	0.941	<0.001	0.889, 0.992
sAxl	0.899	<0.001	0.820, 0.978
Equation 2 (sTyro-3)	0.865	<0.001	0.784, 0.946
sTyro-3	0.754	<0.001	0.644, 0.864

Supplementary Fig. S3. Comparison of area under the curves of equation 1, sAxl, equation 2, and sTyro-3. CI: confidence interval.