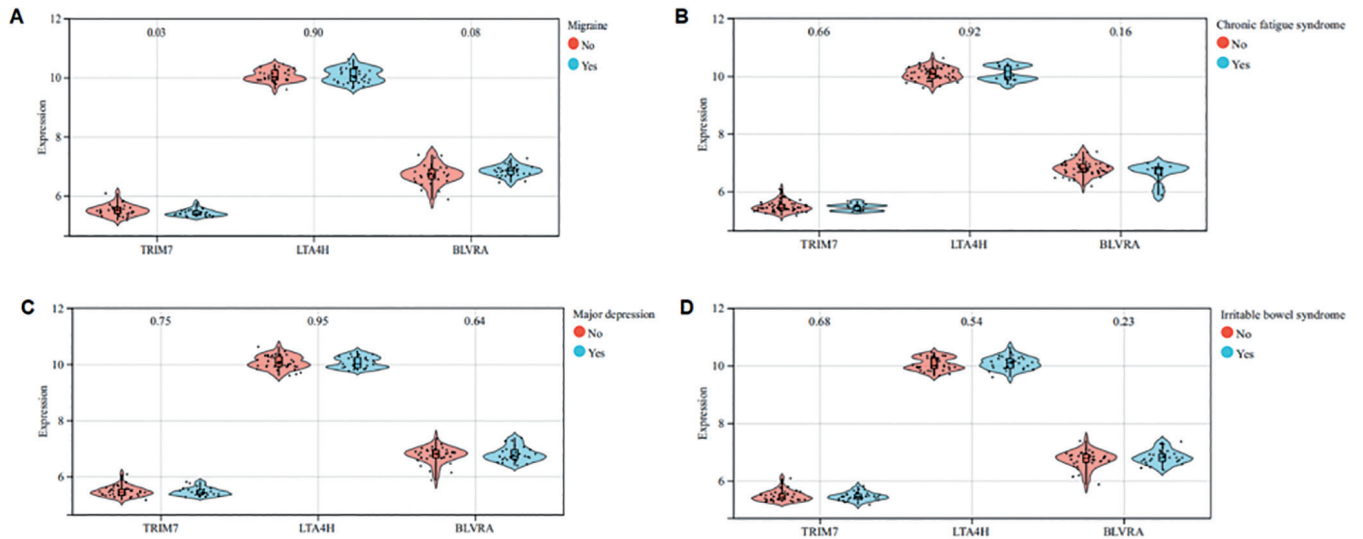


**Supplementary Table S1.** Details of clinical symptoms in the FM dataset.

	FM	HC
Mean FIQR score (sd)	53.7(17.1)	3.5(7.1)
chronic fatigue syndrome	10	0
irritable bowel syndrome	30	3
major depression	25	1
migraine	30	8

**Supplementary Fig. S1.** Differences in key genes in clinical symptoms of FM, including migraine (A), chronic fatigue syndrome (B), major depression (C), irritable bowel syndrome (D).