

Supplementary material

The full protocol for the SPIN COVID-19 Cohort and the present study, which provides more detail on the methods and measures, is available online (<https://osf.io/62vut/>).

The SPIN COVID-19 Patient Advisors include:

Catherine Fortuné, Ottawa Scleroderma Support Group, Ottawa, Ontario, Canada; Amy Gietzen, National Scleroderma Foundation, Tri-State Chapter, Binghamton, New York, USA; Geneviève Guillot, Sclérodermie Québec, Longueuil, Quebec, Canada; Nancy Lewis, Toronto, Ontario, Canada; Karen Nielsen, Scleroderma Society of Ontario, Ottawa, Ontario, Canada; Michelle Richard, Scleroderma Atlantic, Halifax, Nova Scotia, Canada; Maureen Sauvé, Scleroderma Society of Ontario, Hamilton, Ontario, Canada; Joep Welling, NVLE Dutch patient organization for systemic autoimmune diseases, Utrecht, the Netherlands.

The SPIN Investigators include:

Claire E. Adams, Jewish General Hospital, Montreal, Quebec, Canada; Karen Gottesman, National Scleroderma Foundation, Los Angeles, CA, USA; Marie Hudson, McGill University, Montreal, Quebec, Canada; Laura K. Hummers, Johns Hopkins University School of Medicine, Baltimore, MD, USA; Amanda Lawrie-Jones, Scleroderma Australia and Scleroderma Victoria, Melbourne, Victoria, Australia; Vanessa L. Malcarne, San Diego State University, San Diego, CA, USA; Maureen D. Mayes, University of Texas McGovern School of Medicine, Houston, TX, USA; Warren R. Nielson, St. Joseph's Health Care, London, Ontario, Canada; Shervin Assassi, University of Texas McGovern School of Medicine, Houston, Texas, USA; Ghassan El-Baalbaki, Université du Québec à Montréal, Montreal, Quebec, Canada; Cornelia van den Ende, Sint Maartenskliniek, Nijmegen, the Netherlands; Kim Fligelstone, Scleroderma & Raynaud's UK, London, United Kingdom; Tracy M. Frech, University of Utah, Salt Lake City, Utah, USA; Daphna Harel, New York University, New York, NY, USA;

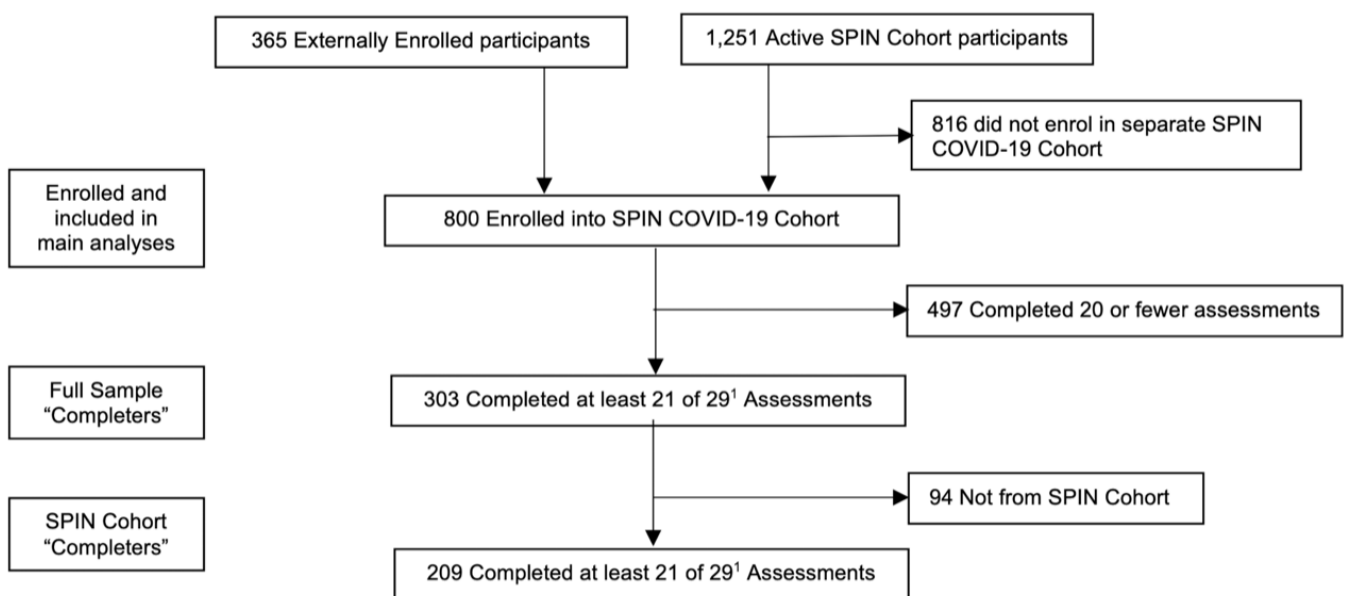
Monique Hinchcliff, Yale School of Medicine, New Haven, Connecticut, USA; Sindhu R. Johnson, Toronto Scleroderma Program, Mount Sinai Hospital, Toronto Western Hospital, and University of Toronto, Toronto, Ontario, Canada; Maggie Larche, McMaster University, Hamilton, Ontario, Canada; Catarina Leite, University of Minho, Braga, Portugal; Christelle Nguyen, Université Paris Descartes, Université de Paris, and Assistance Publique - Hôpitaux de Paris, France; Janet Pope, University of Western Ontario, London, Ontario, Canada; François Rannou, Université Paris Descartes, Université de Paris, and Assistance Publique - Hôpitaux de Paris, France; Tatiana Sofia Rodriguez-Reyna, Instituto Nacional de Ciencias Médicas y Nutrición Salvador Zubirán, Mexico City, Mexico; Anne A. Schouffoer, Leiden University Medical Center, Leiden, the Netherlands; Maria E. Suarez-Almazor, University of Texas MD Anderson Cancer Center, Houston, Texas, USA; Christian Agard, Centre Hospitalier Universitaire - Hôtel-Dieu de Nantes, France; Nassim Ait Abdallah, Assistance Publique - Hôpitaux de Paris, Hôpital St-Louis, Paris, France; Marc André, Centre Hospitalier Universitaire Gabriel-Montpied, Clermont-Ferrand, France; Elana J. Bernstein, Columbia University, New York, NY, USA; Sabine Berthier, Centre Hospitalier Universitaire Dijon Bourgogne, Dijon, France; Lyne Bissonnette, Université de Sherbrooke, Quebec, Canada; Alessandra Bruns, Université de Sherbrooke, Quebec, Canada; Patricia Carreira, Servicio de Reumatología del Hospital 12 de Octubre, Madrid, Spain; Marion Casadevall, Assistance Publique - Hôpitaux de Paris, Hôpital Cochin, Paris, France; Benjamin Chaigne, Assistance Publique - Hôpitaux de Paris, Hôpital Cochin, Paris, France; Lorinda Chung, Stanford University, Stanford, CA, USA; Benjamin Crichi, Assistance Publique - Hôpitaux de Paris, Hôpital St-Louis, Paris, France; Christopher P. Denton, Royal Free London Hospital, London, United Kingdom; Robyn Domsic, University of Pittsburgh, PA, USA; James V. Dunne, St. Paul's Hospital and University of British Columbia, Vancouver, BC, Canada;

Bertrand Dunogue, Assistance Publique - Hôpitaux de Paris, Hôpital Cochin, Paris, France; Regina Fare, Servicio de Reumatología del Hospital 12 de Octubre, Madrid, Spain; Dominique Farge-Bancel, Assistance Publique - Hôpitaux de Paris, Hôpital St-Louis, Paris, France; Paul R. Fortin, CHU de Québec - Université Laval, Quebec, Canada; Jessica Gordon, Hospital for Special Surgery, New York City, NY, USA; Brigitte Granel-Rey, Aix Marseille Université, and Assistance Publique - Hôpitaux de Marseille, Hôpital Nord, Marseille, France; Aurélien Guffroy, Les Hôpitaux Universitaires de Strasbourg, Nouvel Hôpital Civil, Strasbourg, France; Genevieve Gyger, Jewish General Hospital and McGill University, Montreal, Quebec, Canada; Eric Hachulla, Centre Hospitalier Régional Universitaire de Lille, Hôpital Claude Huriez, Lille, France; Sabrina Hoa, Centre Hospitalier de l'Université de Montréal - CHUM, Montreal, Quebec, Canada; Alena Ikic, CHU de Québec - Université Laval, Quebec, Canada; Niall Jones, University of Alberta, Edmonton, Alberta, Canada; Suzanne Kafaja, University of California, Los Angeles, CA, USA; Nader Khalidi, McMaster University, Hamilton, Ontario, Canada; Kimberly Lakin, Hospital for Special Surgery, New York City, NY, USA; Marc Lambert, Centre Hospitalier Régional Universitaire de Lille, Hôpital Claude Huriez, Lille, France; David Launay, Centre Hospitalier Régional Universitaire de Lille, Hôpital Claude Huriez, Lille, France; Yvonne C. Lee, Northwestern University, Chicago, Illinois, USA; Hélène Maillard, Centre Hospitalier Régional Universitaire de Lille, Hôpital Claude Huriez, Lille, France; Nancy Maltez, University of Ottawa, Ontario, Canada; Joanne Manning, Salford Royal NHS Foundation Trust, Salford, United Kingdom; Isabelle Marie, CHU Rouen, Hôpital de Bois-Guillaume, Rouen, France; Maria Martin Lopez, Servicio de Reumatología del Hospital 12 de Octubre, Madrid, Spain; Thierry Martin, Les Hôpitaux Universitaires de Strasbourg, Nouvel Hôpital Civil, Strasbourg, France; Ariel Masetto, Université de Sherbrooke, Quebec, Canada;

François Maurier, Uneos - Groupe Hospitalier Associatif, Metz, France;
 Arsene Mekinian, Assistance Publique - Hôpitaux de Paris, Hôpital St-Antoine, Paris, France;
 Sheila Melchor Díaz, Servicio de Reumatología del Hospital 12 de Octubre, Madrid, Spain;
 Mandana Nikpour, St Vincent's Hospital and University of Melbourne, Victoria, Australia;
 Louis Olagne, Centre Hospitalier Universitaire Gabriel-Montpied, Clermont-Ferrand, France;
 Vincent Poindron, Les Hôpitaux Universitaires de Strasbourg, Nouvel Hôpital Civil, Strasbourg, France;
 Susanna Proudman, Royal Adelaide Hospital and University of Adelaide, Adelaide, South Australia, Australia;
 Alexis Régent, Assistance Publique - Hôpitaux de Paris, Hôpital Cochin, Paris,

France;
 Sébastien Rivière, Assistance Publique - Hôpitaux de Paris, Hôpital St-Antoine, Paris, France;
 David Robinson, University of Manitoba, Winnipeg, Manitoba, Canada;
 Esther Rodriguez Almazar, Servicio de Reumatología del Hospital 12 de Octubre, Madrid, Spain;
 Sophie Roux, Université de Sherbrooke, Quebec, Canada;
 Perrine Smets, Centre Hospitalier Universitaire Gabriel-Montpied, Clermont-Ferrand, France;
 Vincent Sobanski, Centre Hospitalier Régional Universitaire de Lille, Hôpital Claude Huriez, Lille, France;
 Robert Spiera, Hospital for Special Surgery, New York City, NY, USA;
 Virginia Steen, Georgetown University, Washington, DC, USA;
 Evelyn Sutton, Dalhousie University, Hali-

fax, Nova Scotia, Canada;
 Carter Thorne, Southlake Regional Health Centre, Newmarket, Ontario, Canada;
 Pearce Wilcox, St. Paul's Hospital and University of British Columbia, Vancouver, BC, Canada;
 Mara Cañedo Ayala, Jewish General Hospital, Montreal, Quebec, Canada;
 Vanessa Cook, Jewish General Hospital, Montreal, Quebec, Canada;
 Sophie Hu, Jewish General Hospital, Montreal, Quebec, Canada;
 Elsa-Lynn Nassar, Jewish General Hospital, Montreal, Quebec, Canada;
 Marieke Alexandra Neyer, Jewish General Hospital, Montreal, Quebec, Canada;
 Julia Nordlund, Jewish General Hospital, Montreal, Quebec, Canada;
 Sabrina Provencher, Jewish General Hospital, Montreal, Quebec, Canada.



Supplementary Fig. S1. Participant flow chart.

¹Note: Assessment 21 missed due to technical issues. Assessment N = 28.

Supplementary Table S1. SPIN COVID-19 Cohort characteristics of full sample and by SPIN cohort membership.

Variable	Full SPIN COVID-19 Cohort (N = 800)	SPIN Cohort (N = 435)	Non-SPIN Cohort (N = 365)
Sociodemographics			
Age in years, mean (SD) ^a	55.6 (12.6)	57.0 (12.6)	53.3 (12.5)
Female sex, N (%) ^a	719 (90.3)	385 (88.5)	334 (92.5)
Education in years, mean (SD) ^b	15.8 (3.4)	15.9 (3.5)	15.6 (3.3)
Living Alone, N (%) ^c	134 (17.3)	80 (18.7)	54 (15.6)
Employed (full or part time), N (%) ^d	326 (41.1)	198 (45.5)	128 (35.1)
Race/ethnicity, N (%) ^e			
White	655 (83.0)	360 (82.9)	295 (83.1)
Black	53 (6.7)	38 (8.8)	15 (4.2)
Other	81 (10.3)	36 (8.3)	45 (12.7)
Country, N (%) ^f			
Canada	194 (24.6)	97 (22.5)	97 (26.7)
United States	255 (31.8)	128 (29.4)	127 (35.0)
France	206 (25.8)	156 (36.6)	50 (13.8)
United Kingdom	68 (8.5)	50 (11.5)	18 (5.0)
Other	71 (8.9)		71 (19.5)
Disease characteristics			
Time since diagnosis in years, mean ^g (SD) ^g	11.7 (8.0)	12.2 (7.8)	11.0 (8.2)
Diffuse disease subtype, N (%) ^h	322 (41.1)	170 (39.1)	152 (43.6)
Interstitial lung disease, N (%) ⁱ	---	148 (35.2)	---

Due to missing data: ^a N (COVID) = 796, N (non-SPIN) = 361; ^b N (COVID) = 786, N (SPIN) = 432, N (non-SPIN) = 354; ^c N (COVID) = 774, N (SPIN) = 427, N (non-SPIN) = 347; ^d N (COVID) = 794, N (non-SPIN) = 359; ^e N (COVID) = 789, N (SPIN) = 434, N (non-SPIN) = 355; ^f N (COVID) = 798, N (non-SPIN) = 363; ^g N (COVID) = 771, N (SPIN) = 424, N (non-SPIN) = 347; ^h N (COVID) = 784, N (non-SPIN) = 349; ⁱ N (SPIN) = 195. Interstitial lung disease was only collected in the SPIN Cohort.

Figure 2a: Anxiety Symptoms Completers

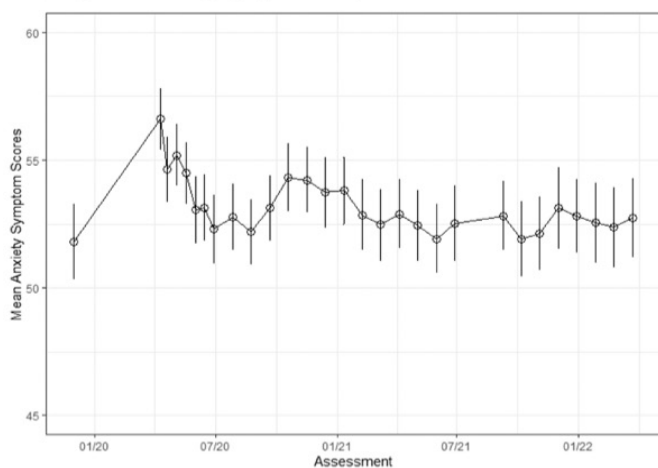


Figure 2c: COVID-19 Fear Completers

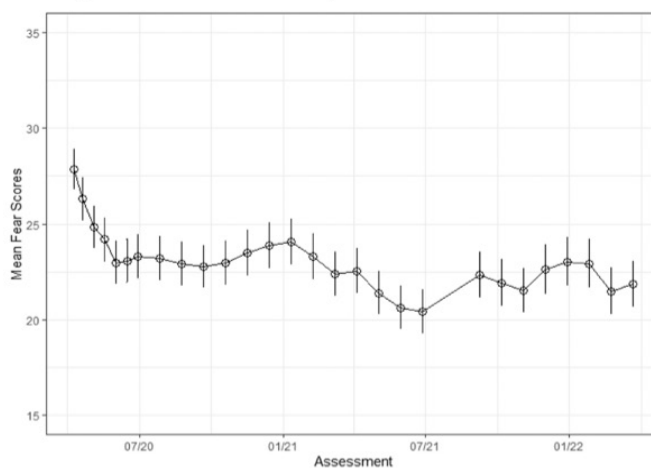


Figure 2b: Depression Symptoms Completers

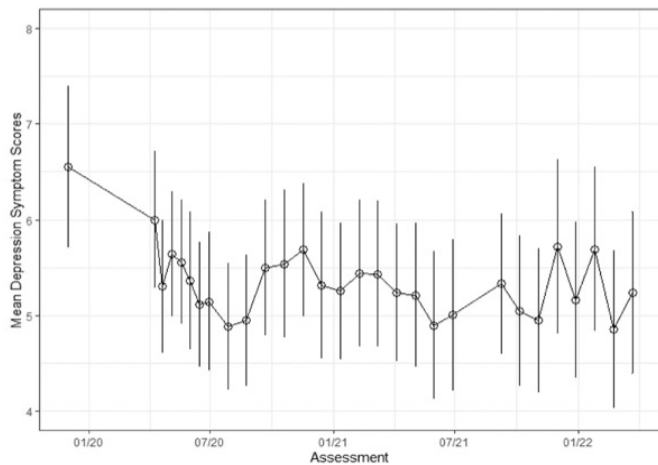
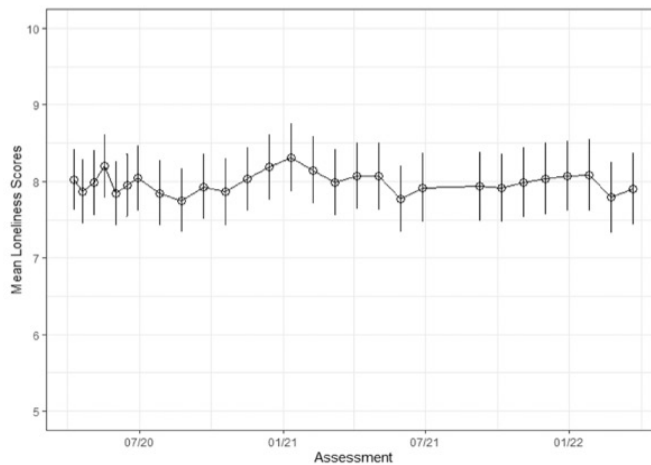


Figure 2d: Loneliness Completers



Supplementary Fig. S2. Completers mean anxiety, depression, fear, and loneliness scores.

Supplementary Table S2. Anxiety and depression means and standard deviations at all assessments for SPIN Cohort sample.

Assessment	Anxiety symptoms			Depression symptoms		
	Full Sample ¹ Mean, SD	N	Completers Mean, SD	Full Sample ² Mean, SD	N	Completers Mean, SD
Pre-COVID-19	52.57, 10.34	209	51.80, 10.70	6.72, 5.67	193	6.55, 5.95
1	57.42, 8.86	209	56.60, 8.77	6.41, 5.41	209	6.00, 5.24
2	55.28, 8.92	198	54.64, 8.93	5.74, 5.00	196	5.30, 4.9
3	55.01, 8.66	200	55.19, 8.60	5.86, 4.75	199	5.64, 4.66
4	53.86, 8.84	199	54.48, 8.56	5.56, 4.80	199	5.56, 4.62
5	53.42, 9.25	200	53.04, 9.44	5.39, 4.79	200	5.37, 5.15
6	53.34, 9.17	202	53.13, 9.38	5.06, 4.53	202	5.11, 4.72
7	53.13, 9.18	194	52.29, 9.49	5.34, 5.03	194	5.14, 5.13
8	53.12, 9.31	199	52.76, 9.29	5.23, 4.74	199	4.88, 4.73
9	52.37, 9.34	197	52.18, 9.03	5.05, 4.72	197	4.95, 4.82
10	53.90, 9.43	202	53.12, 9.13	5.57, 5.06	202	5.50, 5.11
11	54.02, 9.36	189	54.31, 9.35	5.39, 5.24	189	5.54, 3.40
12	54.06, 9.43	196	54.22, 8.98	6.05, 5.24	195	5.69, 4.93
13	53.99, 9.95	195	53.73, 9.86	5.71, 5.24	195	5.32, 5.43
14	54.28, 9.29	194	53.80, 9.28	5.59, 5.04	194	5.25, 5.05
15	52.86, 9.92	198	52.86, 9.77	5.72, 5.42	196	5.44, 5.46
16	52.37, 9.86	194	52.47, 9.71	5.57, 5.37	194	5.43, 5.37
17	53.10, 9.51	201	52.89, 9.75	5.38, 4.82	201	5.24, 5.17
18	52.40, 9.76	202	52.43, 9.93	5.42, 5.23	202	5.21, 5.43
19	52.01, 9.68	198	51.92, 9.63	5.12, 5.41	198	4.89, 5.50
20	52.55, 10.26	178	52.52, 9.90	5.29, 5.30	178	5.01, 5.34
21 ³	---	---	---	---	---	---
22	53.49, 9.89	190	52.82, 9.48	5.84, 5.29	190	5.33, 5.14
23	52.35, 9.64	174	51.91, 9.87	5.21, 4.98	173	5.05, 5.23
24	52.11, 9.90	187	52.13, 9.89	5.07, 5.14	187	4.95, 5.19
25	53.19, 10.39	164	53.12, 10.34	5.80, 5.87	164	5.72, 5.92
26	52.82, 9.40	176	52.82, 9.64	5.15, 5.23	176	5.16, 5.50
27	53.01, 10.19	168	52.54, 10.20	5.84, 5.50	168	5.69, 5.65
28	53.06, 9.89	156	52.36, 9.79	5.51, 5.43	156	4.85, 5.20
29	53.41, 10.25	166	52.74, 10.16	5.70, 5.84	166	5.24, 5.51

¹All imputed N = 435; ²All imputed N = 388. SD = standard deviation; ³Assessment missed due to technical issue.

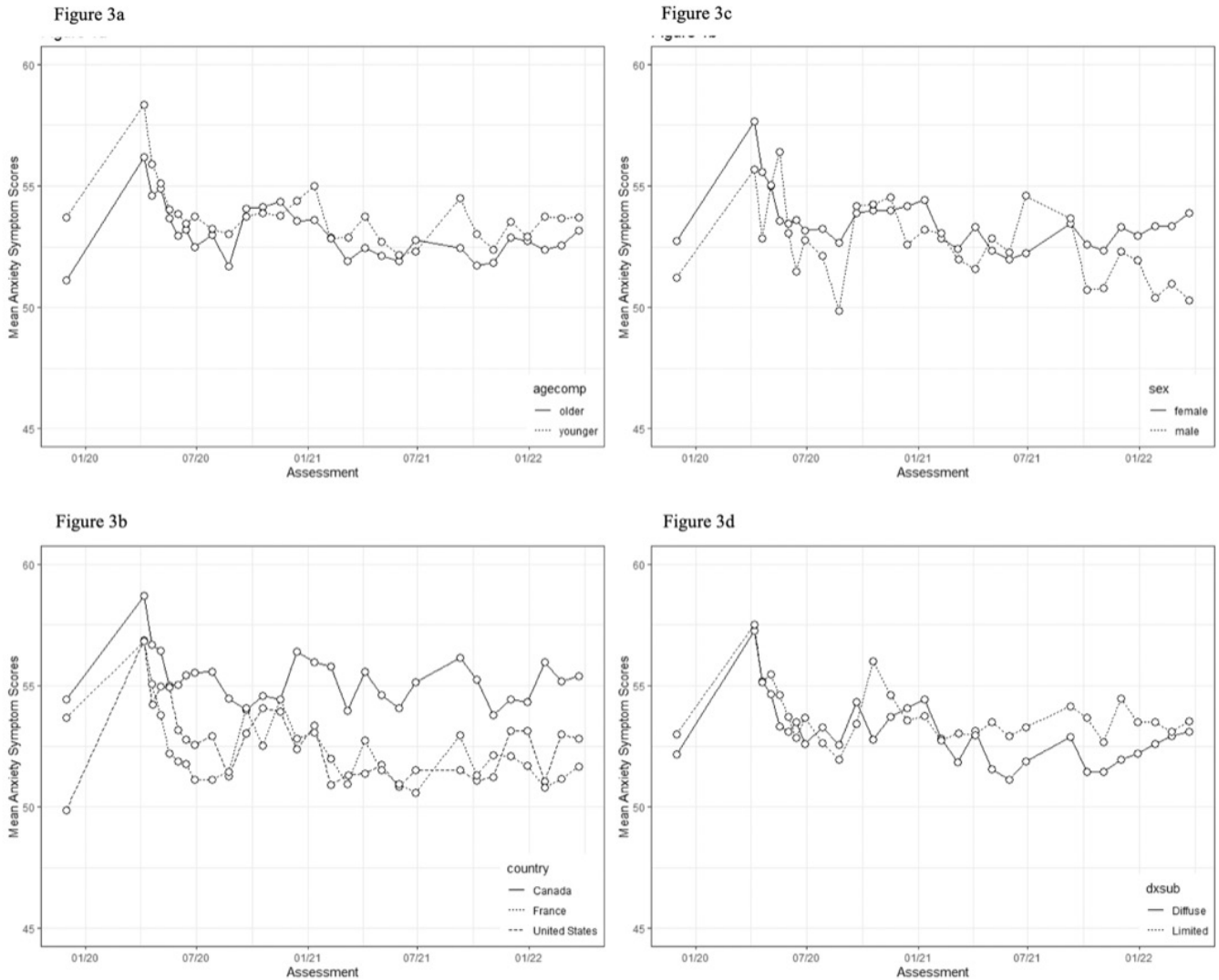
Supplementary Table S3. Loneliness and fear of COVID-19 means and standard deviations at all assessments.

Assessment	Loneliness symptoms			Fear of COVID-19		
	Full Sample ¹ Mean, SD	N	Completers Mean, SD	Full Sample ¹ Mean, SD	N	Completers Mean, SD
1	8.32, 3.72	302	8.02, 3.52	27.98, 9.67	303	27.85, 9.43
2	8.20, 3.74	282	7.87, 3.57	26.17, 9.37	282	26.30, 9.48
3	7.97, 3.65	281	7.98, 3.60	24.85, 9.47	281	24.85, 9.35
4	8.02, 3.63	287	8.20, 3.50	23.75, 9.38	287	24.19, 9.58
5	7.87, 3.72	287	7.84, 3.64	23.19, 9.59	288	22.98, 9.79
6	8.08, 3.64	292	7.95, 3.55	23.05, 9.54	292	23.07, 9.88
7	8.12, 3.64	280	8.04, 3.64	23.04, 9.50	280	23.30, 9.76
8	8.05, 3.79	287	7.85, 3.69	23.24, 9.67	287	23.18, 9.91
9	7.95, 3.64	286	7.75, 3.54	22.76, 9.60	287	22.92, 9.79
10	7.98, 3.76	286	7.93, 3.65	23.49, 9.74	286	22.79, 9.55
11	8.02, 3.68	275	7.87, 3.68	23.38, 9.95	275	22.97, 9.86
12	8.12, 3.76	284	8.03, 3.54	23.79, 10.13	284	23.49, 10.13
13	8.13, 3.71	287	8.19, 3.67	23.95, 10.10	287	23.88, 10.23
14	8.33, 3.83	282	8.31, 3.77	24.20, 10.24	282	24.07, 10.26
15	8.14, 3.85	285	8.15, 3.77	23.04, 10.21	285	23.31, 10.41
16	7.94, 3.73	287	7.99, 3.70	22.22, 9.59	287	22.38, 9.95
17	8.02, 3.61	287	8.07, 3.70	22.39, 9.96	287	22.54, 10.12
18	8.02, 3.76	289	8.07, 3.76	21.35, 9.70	290	21.40, 9.81
19	7.77, 3.72	286	7.77, 3.72	20.63, 9.53	286	20.64, 9.74
20	7.90, 3.71	266	7.92, 3.72	20.50, 9.58	266	20.41, 9.55
21 ³	---	---	---	---	---	---
22	7.98, 3.82	273	7.93, 3.76	22.18, 9.75	273	22.34, 9.91
23	7.88, 3.64	253	7.92, 3.60	21.80, 9.72	254	21.93, 9.94
24	7.92, 3.70	266	7.98, 3.80	21.68, 9.59	266	21.55, 9.52
25	8.00, 3.68	238	8.03, 3.66	22.74, 10.12	238	22.64, 10.21
26	7.86, 3.61	252	8.07, 3.70	22.35, 9.84	252	23.02, 10.21
27	7.95, 3.70	243	8.08, 3.73	22.62, 10.11	243	22.93, 10.13
28	7.86, 3.65	232	7.79, 3.58	21.45, 9.34	232	21.48, 9.44
29	7.86, 3.60	231	7.90, 3.64	21.98, 9.34	231	21.86, 9.21

¹All imputed N = 800. SD = standard deviation; ³Assessment missed due to technical issue.

Supplementary Table S4. Completers SMD and 95% CI.

	Anxiety	Depression	Fear	Loneliness
April 2020 vs. Pre-COVID-19	.49 (.29, .68)	-.10 (-.29, .09)	---	---
March 2021 vs. Pre-COVID-19	.10 (-.09, .30)	-.19 (-.39, .01)	---	---
March 2022 vs. Pre-COVID-19	.09 (-.13, .31)	-.23 (-.44, -.01)	---	---
March 2021 vs. April 2020	.11 (-.09, .31)	.04 (-.16, .24)	-.46 (-.62, -.29)	.04 (-.13, .20)
March 2022 vs. April 2020	.15 (-.07, .36)	.05 (-.17, .27)	-.64 (-.83, -.45)	-.03 (-.22, .15)



Supplementary Figures S3. Trend figures by demographic groups.

Note: Please see Supplementary Table S3 for number of participants at each time point.

Figure 4a

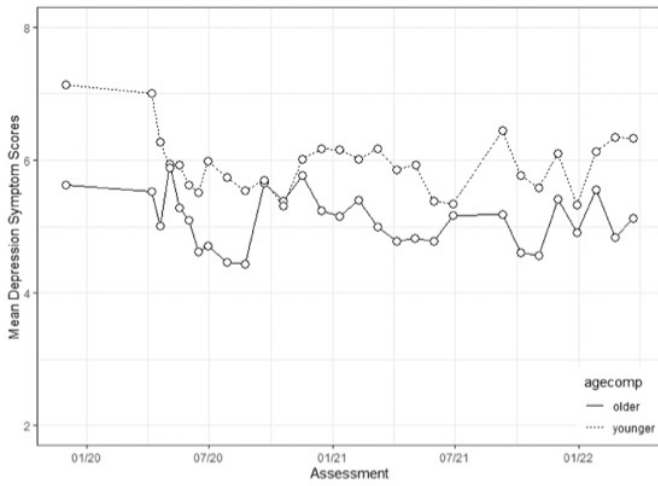


Figure 4c

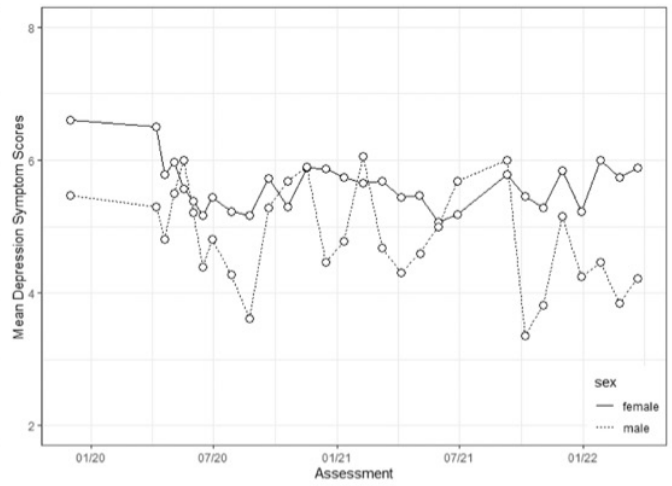


Figure 4b

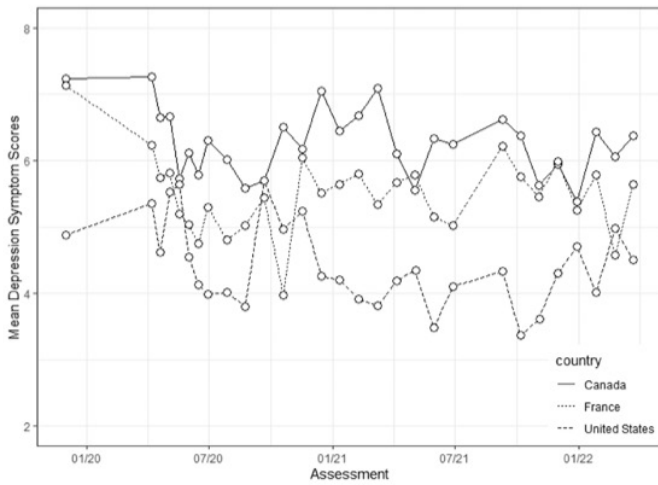
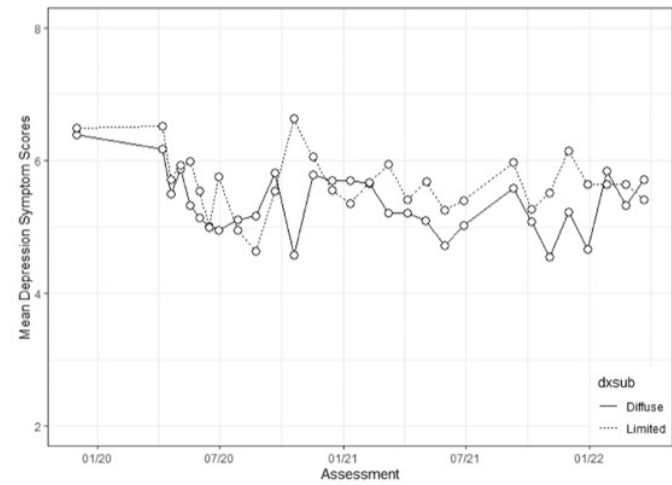


Figure 4d



Supplementary Figures S4. Trend figures by demographic groups.

Note: Please see Supplementary Table S3 for number of participants at each time point.

Figure 5a

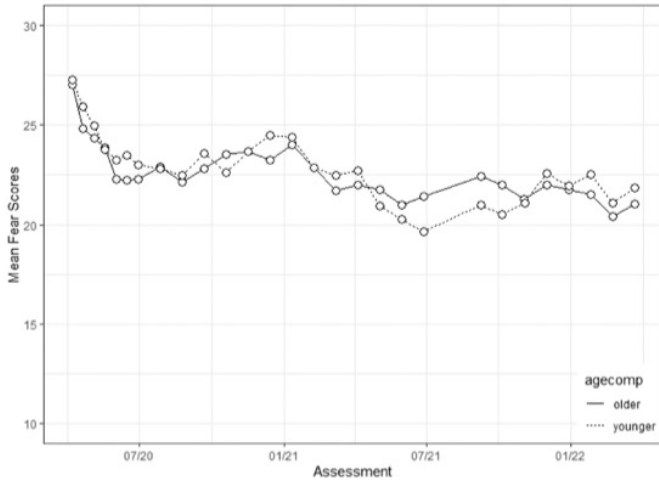


Figure 5c

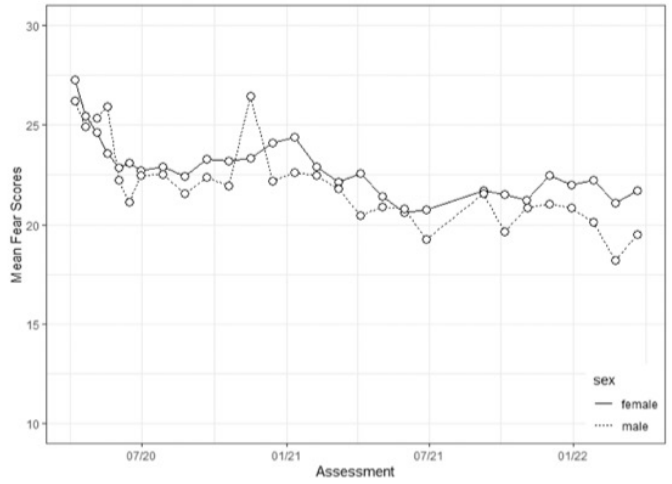


Figure 5b

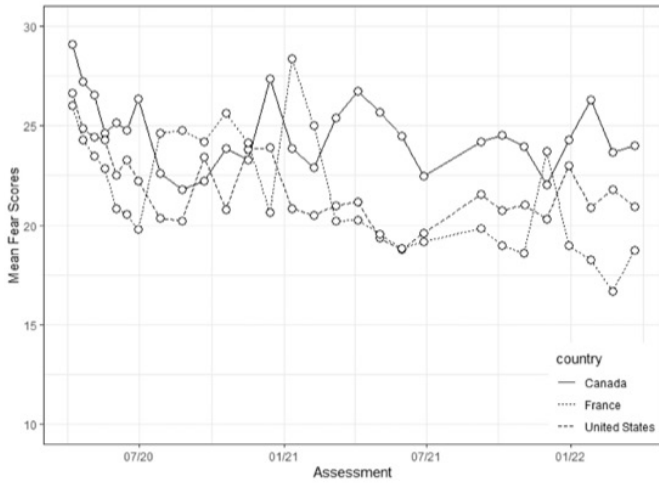
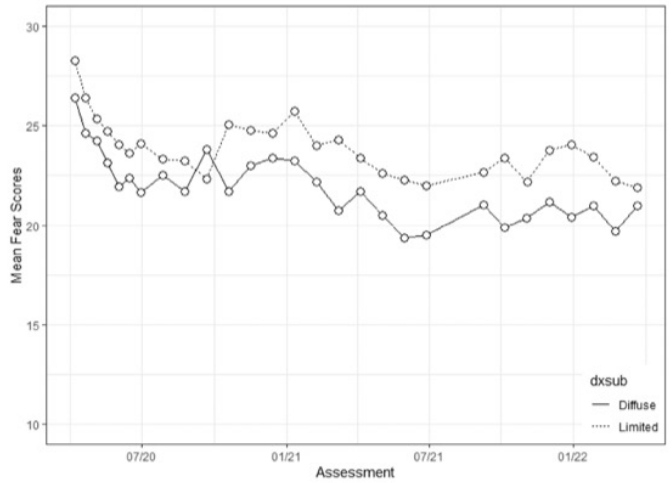


Figure 5d



Supplementary Figures S5. Trend figures by demographic groups.
 Note: Please see Supplementary Table S4 for number of participants at each time point.

Figure 6a

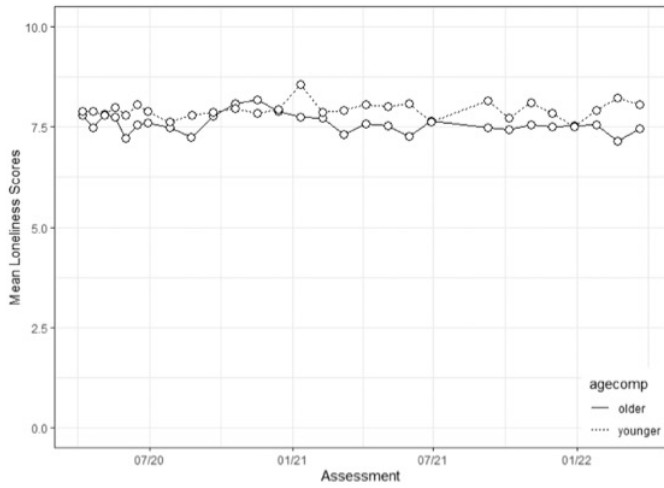


Figure 6c

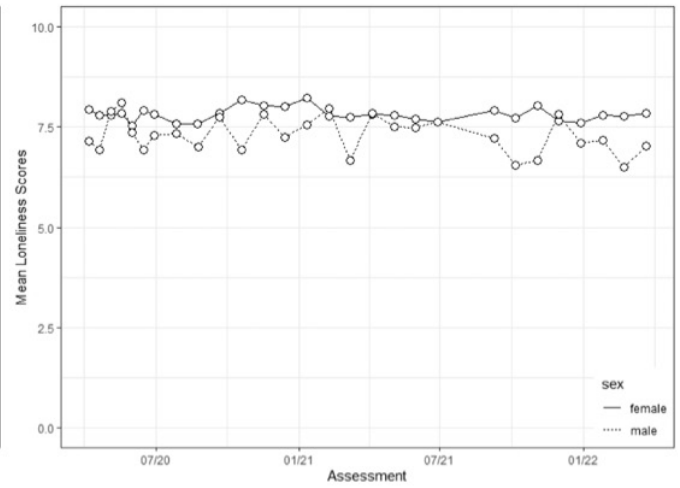


Figure 6b

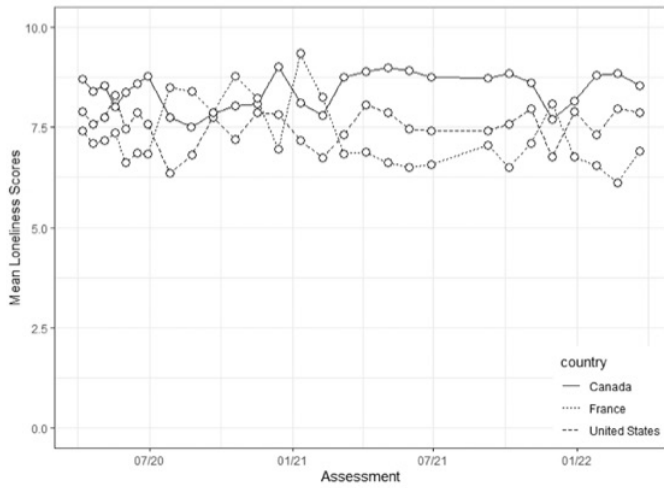
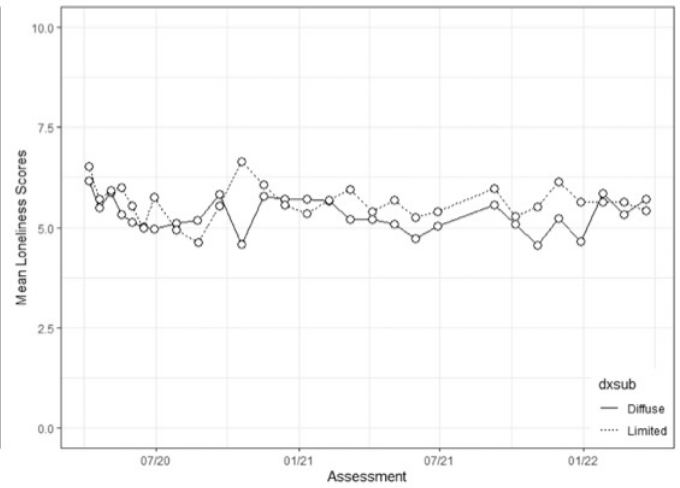


Figure 6d



Supplementary Figures S6. Trend figures by demographic groups.
 Note: Please see Supplementary Table S4 for number of participants at each time point.