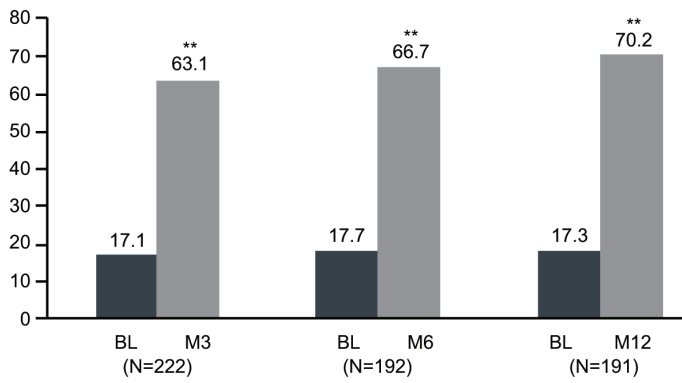
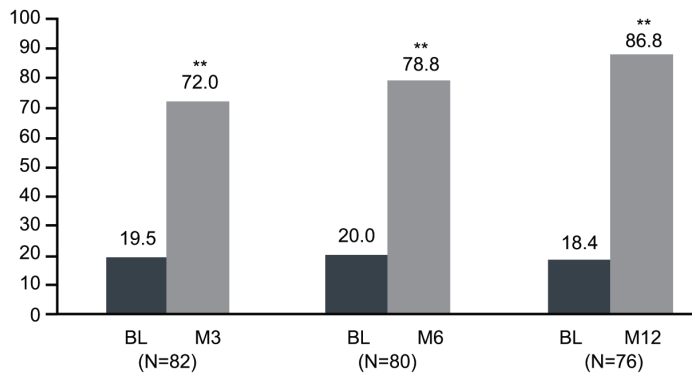


**Supplementary Fig. S1.** QoL/EQ-5D Percent patients reporting no problems according to the EQ-5D-3L tool for each dimension in (A) RA patients, (B) PsA patients, and (C) axSpA patients.

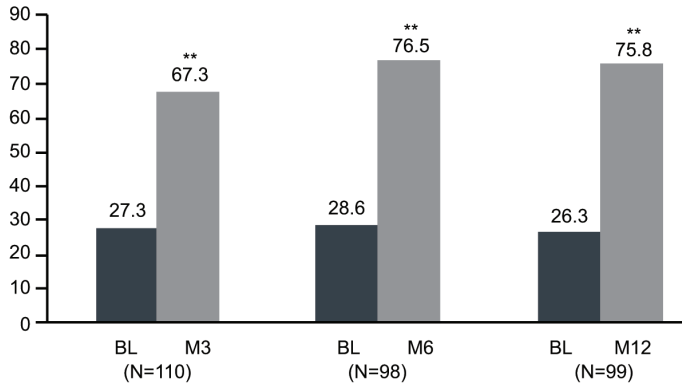
**A. RA patients - PASS - % of patients with State of the disease satisfactory (ITT population)**



**B. PsA patients - PASS - % of patients with State of the disease satisfactory (ITT population)**



**C. axSpA patients - PASS - % of patients with State of the disease satisfactory (ITT population)**



**Supplementary Fig. S2.** PASS results for individual conditions over 12 months. Logistic regression.

**Supplementary Table S1.** Overall population - Variables associated with treatment response at Month 6 with a *p*-value  $\leq 0.20$  in the univariate logistic regression analysis (ITT population).

		OR	95%CI	<i>p</i> -value
Age (yrs)	$\leq 35$	1		0.0187
	>35 and <65	0.785	[0.469; 1.314]	0.3571
	$\geq 65$	1.082	[0.637; 1.838]	0.7704
BMI*	Normal/underweight	1		<0.0001
	Overweight	0.588	[0.465; 0.743]	<0.0001
	Obese	0.692	[0.549; 0.871]	0.0018
Pathology	RA	1		0.0189
	axSpA	0.648	[0.475; 0.883]	0.0059
	PsA	0.742	[0.558; 0.987]	0.0404
Reasons for switching from first anti-TNF	Secondary loss of response	1		0.0202
	Tolerability/safety issues	0.706	[0.510; 0.976]	0.0353
	Elective/Other reason	0.636	[0.432; 0.937]	0.0219
Enthesitis at baseline	No	1		
	Yes	0.500	[0.274; 0.915]	0.0245
Psoriasis at baseline	No	1		
	Yes	1.367	[0.884; 2.115]	0.1602

\* BMI: <18.5: underweight;  $\geq 18.5$  and <25: normal;  $\geq 25$  and <30: overweight;  $\geq 30$  : obesity

**Supplementary Table S2.** Overall population - Statistically significant prognostic factors of treatment response at Month 6 in the multivariate logistic regression (ITT population).

		OR	95%CI	<i>p</i> -value
Pathology	RA	1		0.0194
	axSpA	0.525	[0.326; 0.845]	0.0079
	PsA	0.561	[0.318; 0.989]	0.0458
BMI*	Normal/underweight	1		0.0031
	Overweight	0.546	[0.350; 0.852]	0.0077
	Obese	0.472	[0.289; 0.770]	0.0026
Enthesitis at baseline	No	1		
	Yes	0.396	[0.199; 0.788]	0.0083
Psoriasis at baseline	No	1		
	Yes	2.184	[1.229; 3.880]	0.0077

\* BMI: <18.5: underweight;  $\geq 18.5$  and <25: normal;  $\geq 25$  and <30: overweight;  $\geq 30$  : obesity