

**Supplementary Table S1.** Comparison of clinical and laboratory parameters between baseline and follow-up in patients with IgG4-related autoimmune pancreatitis.

	Baseline	Follow-up	<i>p</i> -value
Eos (%)	4.60 ± 5.19	0.72 ± 1.13	0.002
ALT (U/L)	88.98 ± 119.29	25.0 ± 27.93	0.018
AST (U/L)	51.54 ± 54.74	18.67 ± 10.23	0.009
TBIL (umol/L)	60.27 ± 73.76	13.28 ± 10.29	0.006
DBIL (umol/L)	46.30 ± 61.98	4.24 ± 5.17	0.004
ALP (U/L)	169.97 ± 124.07	64.23 ± 30.33	0.001
GGT (U/L)	168.24 ± 167.10	35.44 ± 29.82	0.001
Amylase (U/L)	67.08 ± 42.08	51.57 ± 15.53	0.293
Lipase (U/L)	91.14 ± 85.80	29.27 ± 19.01	0.041
ESR (mm/h)	20.95 ± 14.18	9.61 ± 11.34	<0.001
CRP (mg/dl)	0.33 ± 0.50	0.38 ± 0.99	0.845
IgG (mg/dl)	1779.17 ± 489.79	1059.03 ± 304.53	<0.001
IgG4 (mg/dl)	1127.43 ± 736.84	325.74 ± 335.95	<0.001
IgE (IU/ml)	530.30 ± 840.06	343.89 ± 1254.42	0.434
C3 (g/L)	124.83 ± 43.20	112.16 ± 17.65	0.664
C4 (g/L)	25.80 ± 9.35	25.12 ± 6.67	0.876
PGA	4.85 ± 2.46	0.85 ± 1.21	<0.001
IgG4-RD RI	9.98 ± 4.26	2.44 ± 2.06	<0.001
Number of involved organs	3.90 ± 1.88	2.19 ± 1.48	<0.001

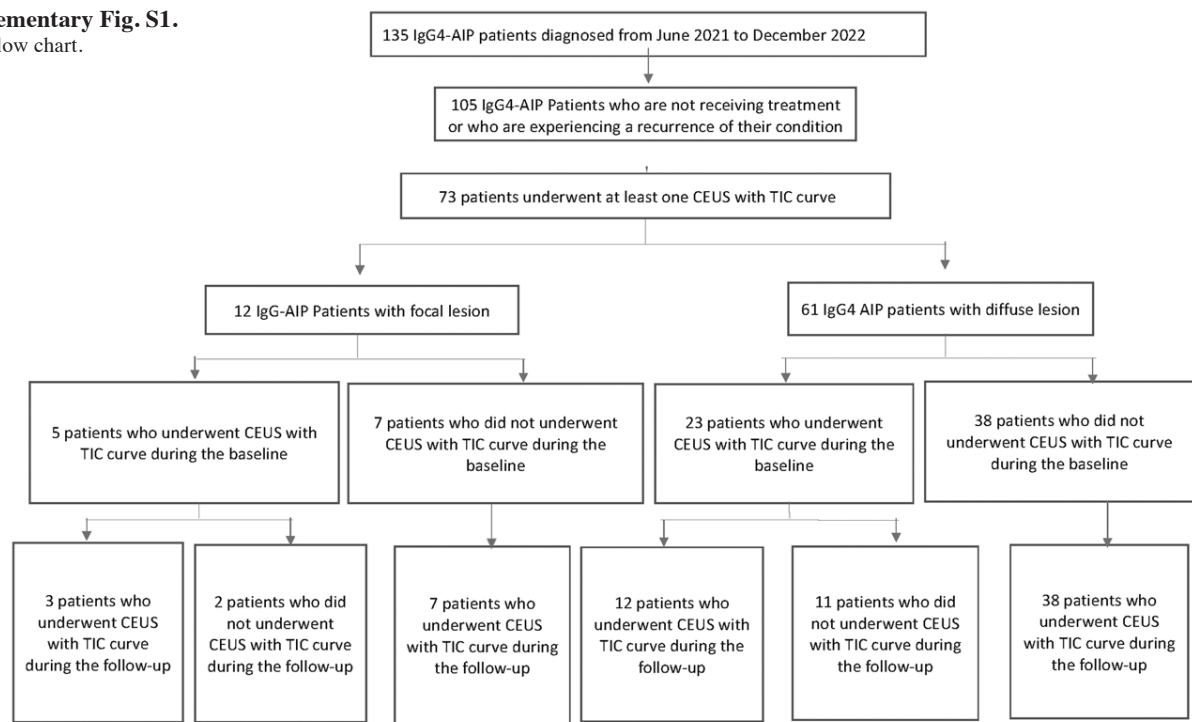
Eos (%): percentage of eosinophils; PGA: physician global assessment; IgG4-RD: IgG4-related disease; RI: responder index.

**Supplementary Table S2.** Ultrasonographic characteristics of 12 patients with focal and multifocal IgG4-AIP.

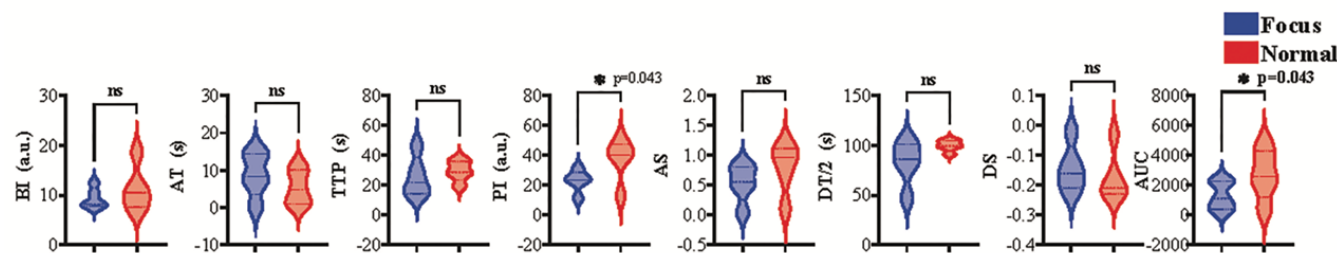
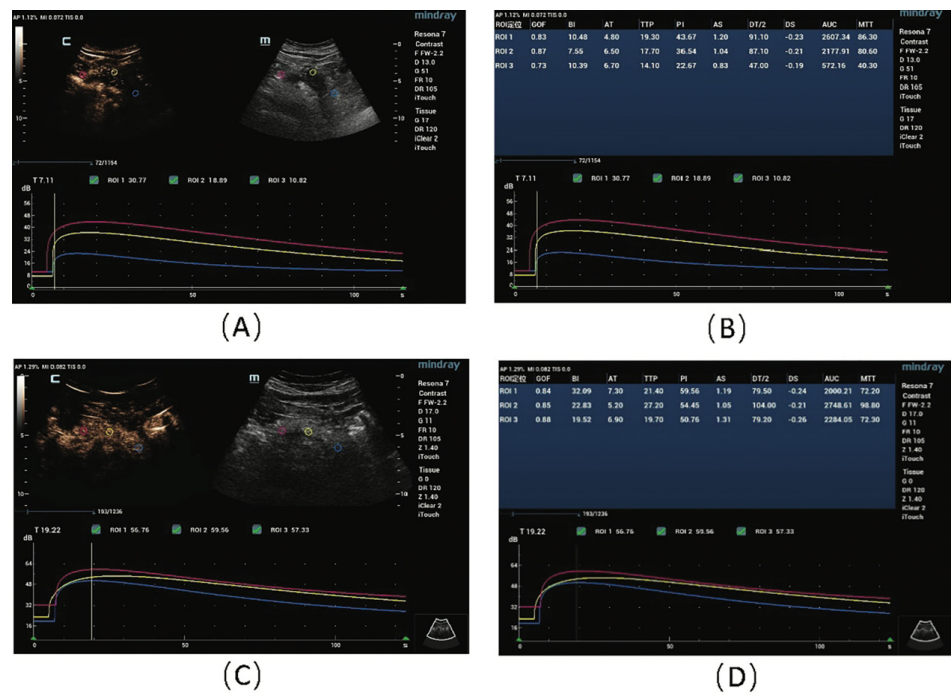
Characteristics	Baseline	Follow-up	<i>p</i> -value
Lesion size(cm)	4.3 ± 2.0	1.7 ± 1.6	0.01
Echogenicity			
Hypoechoic	12 (100%)	12 (100%)	
Isoechoic	0	0	
Arterial phase			0.73
Hypo-enhancement	6 (50%)	6 (50%)	
Iso-enhancement	3 (25%)	5 (41.7%)	
Hyper-enhancement	3 (25%)	1 (8.3%)	
Venous phase			0.80
Hypo-enhancement	8 (66.6%)	7 (58.3%)	
Iso-enhancement	2 (16.6%)	4 (33.3%)	
Hyper-enhancement	2 (16.6%)	1 (0)	

*p*-value of <0.05 was considered statistically significant.

Supplementary Fig. S1.  
Study flow chart.



Supplementary Fig. S2. Baseline and follow-up CEUS imaging and TIC parameters of IgG4-AIP.  
A: Diffuse mild inhomogeneous enhancement of the pancreatic gland (the video of baseline).  
C: Diffuse moderate inhomogeneous enhancement of the pancreatic gland (the video of follow-up).  
B and D: Modelling of TIC curves and calculation of quantitative parameters.



Supplementary Fig. S3. Comparison of contrast-enhanced ultrasound parameters between focal nodules and normal tissues at baseline.  
PI: peak intensity; BI: baseline intensity; AT: arise time; TTP: time to peak; DT/2: half time of peak intensity; AS: ascending slope; DS: descending slope; AUC: area under the curve.