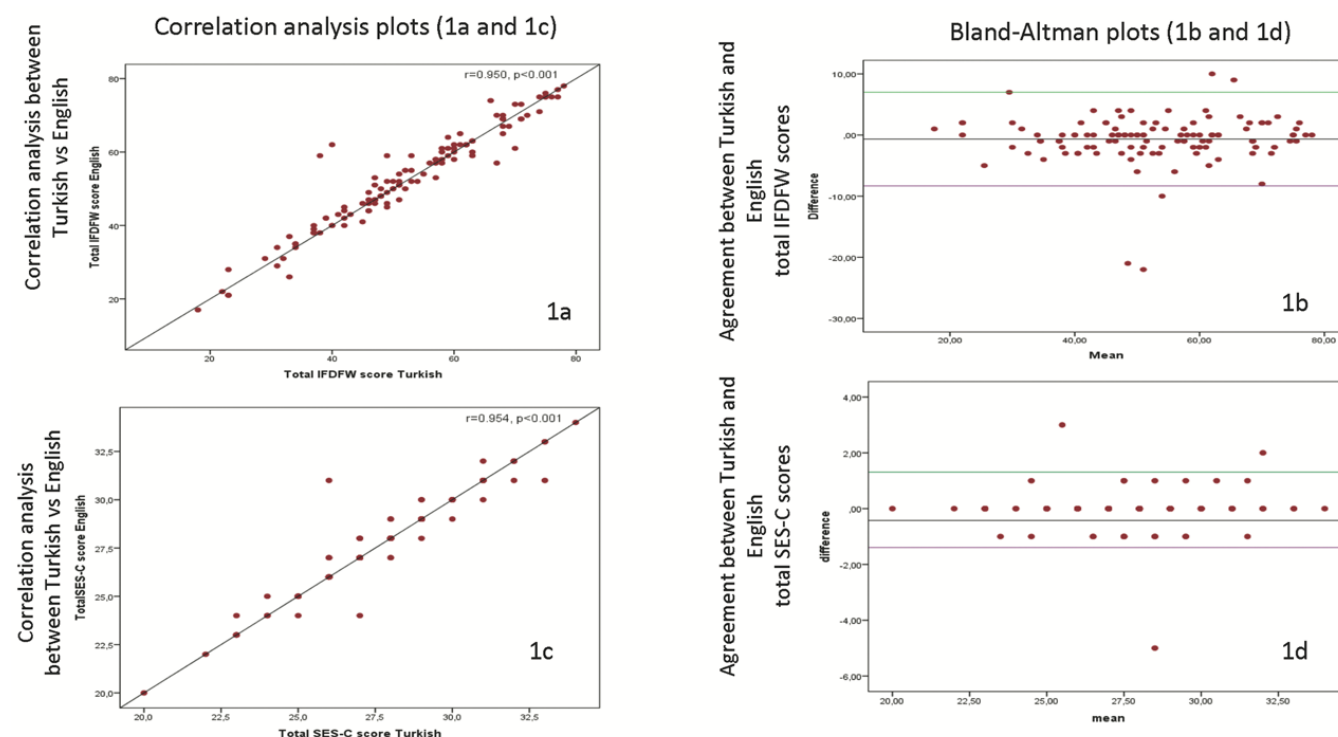


Supplementary Table S1. Incharge Financial Distress/Financial Well-being (IFDFW)* reliability analysis.

| | Scale average if item deleted | Scale difference if item deleted | Corrected item-total correlation | Square multiple correlation | Cronbach Alpha if item deleted |
|---------|-------------------------------|----------------------------------|----------------------------------|-----------------------------|--------------------------------|
| Item 1. | 46.01 | 158.128 | 0.712 | 0.523 | 0.870 |
| Item 2. | 46.64 | 153.958 | 0.705 | 0.656 | 0.869 |
| Item 3. | 46.47 | 149.277 | 0.753 | 0.746 | 0.864 |
| Item 4. | 45.69 | 149.294 | 0.690 | 0.482 | 0.869 |
| Item 5. | 43.72 | 161.622 | 0.530 | 0.304 | 0.884 |
| Item 6. | 44.93 | 148.183 | 0.496 | 0.336 | 0.896 |
| Item 7. | 45.91 | 136.359 | 0.743 | 0.598 | 0.864 |
| Item 8. | 46.29 | 144.822 | 0.758 | 0.619 | 0.862 |

Supplementary Table S2. Incharge Financial Distress/Financial Well-being (IFDFW) English vs. Turkish correlation analysis.

| IFDFW English | IFDFW Turkish | Correlation coefficient | p-value |
|---------------|---------------|-------------------------|---------|
| T1 | E1 | 0.898 | <0.001 |
| T2 | E2 | 0.943 | <0.001 |
| T3 | E3 | 0.905 | <0.001 |
| T4 | E4 | 0.839 | <0.001 |
| T5 | E5 | 0.802 | <0.001 |
| T6 | E6 | 0.842 | <0.001 |
| T7 | E7 | 0.854 | <0.001 |
| T8 | E8 | 0.937 | <0.001 |

**Supplementary Fig. S1.** Correlation analysis and Bland-Altman plots between Turkish vs. English IFDFW and SES-C scores. Correlation analysis between Turkish and English IFDFW scores (a), Bland-Altman agreement plot between Turkish and English IFDFW scores (b), Correlation analysis between Turkish and English SES-C scores (c), Bland-Altman agreement plot between Turkish and English SES-C scores (d).

Supplementary Table S3. Socieconomic-composite scale (SES-C) correlation analysis.

| SES-C English | SES-C Turkish | Correlation coefficient | p-value |
|---------------|---------------|-------------------------|---------|
| Item 1 | Item 1 | 0.934 | <0.001 |
| Item 2 | Item 2 | 0.925 | <0.001 |
| Item 3 | Item 3 | 0.897 | <0.001 |
| Item 4 | Item 4 | 0.896 | <0.001 |
| Item 5 | Item 5 | 1.000 | . |
| Item 6 | Item 6 | 0.927 | <0.001 |
| 7 (a) | 7 (a) | 0.949 | <0.001 |
| 7 (b) | 7 (b) | 0.953 | <0.001 |
| Item 7 | Item 7 | 0.921 | <0.001 |
| Item 8 | Item 8 | 1.000 | . |
| Item 9 | Item 9 | 1.000 | . |
| Item 10 | Item 10 | 0.971 | <0.001 |

Supplementary Table S4. Agreement between Turkish and English Socieconomic-composite scale (SES-C) items.

| SES-C items | Cohen's Kappa coefficient | p-value |
|----------------|---------------------------|---------|
| Item 1 | 0.931 | < 0.001 |
| Item 2 | 0.899 | <0.001 |
| Item 3 | 0.897 | < 0.001 |
| Item 4 | 0.874 | < 0.001 |
| Item 5 | 1.000 | < 0.001 |
| Item 6 | 0.927 | < 0.001 |
| Item 7 | 0.949 | < 0.001 |
| Item 8 | 1.000 | < 0.001 |
| Item 9 | 1.000 | < 0.001 |
| Item 10 | 0.970 | < 0.001 |

Supplementary Table S5. Sociodemographic features of male participants.

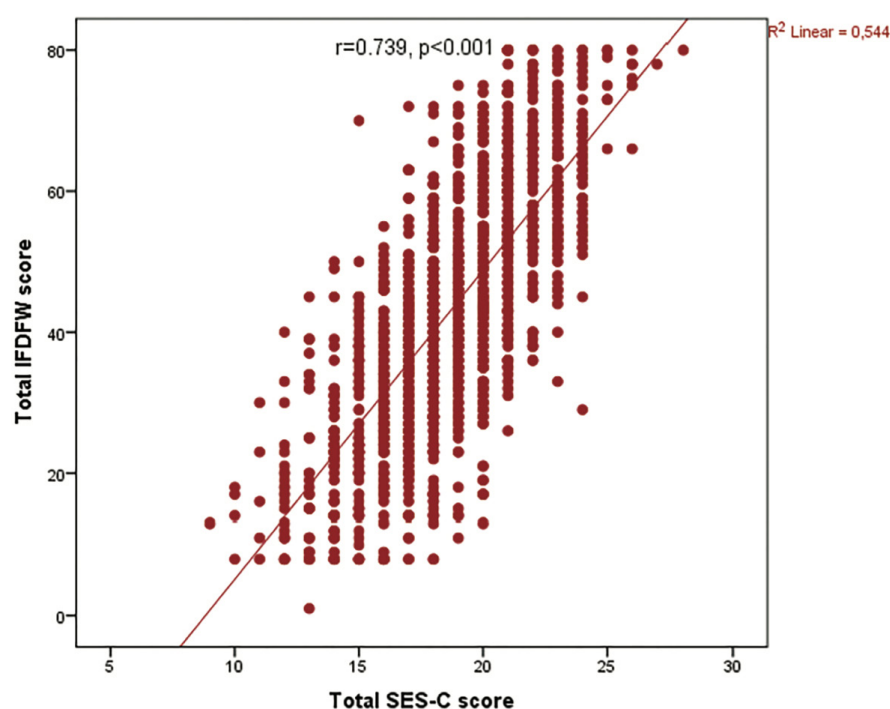
| | Behçet syndrome (BS), n=296 | Ankylosing spondylitis (AS), n=83 | Psoriatic arthritis (PsA), n=49 | Inflammatory bowel disease (IBD), n=81 | Multiple sclerosis (MS), n=36 | Healthy controls (HCs), n=199 | p-value |
|---|-----------------------------|-----------------------------------|---------------------------------|--|-------------------------------|-------------------------------|------------------|
| Age, mean±SD, years | 41.40 ± 10.47 | 41.23 ± 9.58 | 41.04 ± 12.06 | 39.43 ± 11.79 | 38.81 ± 11.76 | 40.88 ± 12.28 | 0.549 |
| Disease duration, median (min-max), years | 14 (0.1-60) | 10.5 (0.2-34) | 5 (0.1-35) | 7 (0.2-34) | 5 (0.1-29) | - | <0.001a, b, c, d |
| BMI, mean ± SD, kg/m2 | 26.89 ± 4.78 | 27.66 ± 4.12 | 27.53 ± 4.53 | 25.4 ± 4.96 | 24.66 ± 3.6 | 27.71 ± 4.7 | <0.001e, f, g, h |
| Comorbidities | | | | | | | |
| Hypertension, n (%) | 40 (13.5) | 15 (18) | 12 (24.5) | 6 (7.4) | 2 (5.6) | 29 (14.6) | 0.055 |
| Diabetes mellitus, n (%) | 25 (8.4) | 7 (8.4) | 9 (18.4) | 2 (2.5) | 0 (0) | 24 (12.1) | 0.009 |
| Malignancy, n (%) | 4 (1.4) | 0 (0) | 0 (0) | 4 (4.9) | 0 (0) | 1 (0.5) | 0.030 |
| Living in rural region, n (%) | 23 (7.8) | 3 (3.61) | 1 (2) | 3 (3.7) | 0 (0) | 3 (1.5) | 0.013 |
| Difficult access to healthcare, n (%) | 96 (32.4) | 19 (22.9) | 16 (32.6) | 24 (29.6) | 5 (13.9) | 33 (16.6) | 0.001 |
| Marital status | | | | | | | 0.159 |
| Single, n (%) | 71 (24) | 21 (25.3) | 15 (30.6) | 24 (30.4) | 16 (44.5) | 57 (28.6) | - |
| Married, n (%) | 211 (71.3) | 59 (71.1) | 30 (61.2) | 54 (65.8) | 20 (55.5) | 139 (69.8) | - |
| Divorced/Widowed, n (%) | 11 (3.7) | 3 (3.6) | 4 (8.2) | 3 (3.8) | 0 (0) | 3 (1.5) | - |
| Not reported, n (%) | 3 (1) | 0 (0) | 0 (0) | 0 (0) | 0 (0) | 0 (0) | - |
| Number of children, median (min-max) | 2 (0-7) | 2 (0-7) | 1 (0-5) | 1 (0-8) | 1 (0-4) | 1 (0-5) | 0.016a, i |
| Smoking status | | | | | | | <0.001 |
| Never smoked, n (%) | 78 (26.4) | 30 (36.1) | 12 (24.5) | 21 (25.9) | 18 (50) | 86 (43.2) | - |
| Ex-smoker, n (%) | 69 (23.3) | 8 (9.6) | 16 (32.6) | 29 (35.8) | 10 (27.8) | 37 (18.6) | - |
| Active-smoker, n (%) | 148 (50) | 45 (54.2) | 21 (42.9) | 31 (38.3) | 8 (22.2) | 76 (38.2) | - |
| Not reported, n (%) | 1 (0.3) | 0 (0) | 0 (0) | 0 (0) | 0 (0) | 0 (0) | - |
| Alcohol use | | | | | | | 0.098 |
| Never, n (%) | 203 (68.6) | 41 (49.4) | 31 (63.2) | 49 (60.5) | 23 (63.9) | 137 (68.8) | - |
| Socially, n (%) | 83 (28) | 38 (45.8) | 16 (32.7) | 28 (34.6) | 12 (33.4) | 50 (25.1) | - |
| Regularly, n (%) | 10 (3.4) | 4 (4.8) | 2 (4.1) | 4 (4.9) | 1 (2.7) | 12 (6) | - |

aBS vs. MS; p<0.05, bBS vs. AS; p<0.05, cBS vs. PsA; p<0.05, dBS vs. IBD; p<0.05, eAS vs. IBD; p<0.05, fAS vs. MS; p<0.05, gIBD vs. HCs; p<0.05, hMS vs. HCs; p<0.05, iBS vs. HCs; p<0.05.

Supplementary Table S6. Sociodemographic features of female participants.

| | Behçet syndrome (BS), n=210 | Ankylosing spondylitis (AS), n=61 | Psoriatic arthritis (PsA), n=64 | Inflammatory bowel disease (IBD), n=59 | Multiple sclerosis (MS), n=58 | Healthy controls (HCs), n=203 | p-value |
|---|-----------------------------|-----------------------------------|---------------------------------|--|-------------------------------|-------------------------------|------------------------|
| Age, mean±SD, years | 44.34 ± 11.69 | 44.2 ± 11.68 | 44.81 ± 12.6 | 46.51 ± 13.57 | 41.16 ± 9.46 | 44.31 ± 10.95 | 0.256 |
| Disease duration, median (min-max), years | 15 (0.1-42) | 9 (0.3-45) | 3 (0.1-42) | 12 (0.5-43) | 6 (1-23) | - | <0.001a, c, d, e, f, g |
| BMI, mean±SD, kg/m ² | 27.25 ± 5.51 | 26.12 ± 4.74 | 28.86 ± 6.06 | 26.91 ± 6.91 | 26.20 ± 5.29 | 27.73 ± 6.12 | 0.054 |
| Comorbidities | | | | | | | |
| Hypertension, n (%) | 45 (21.4) | 15 (24.6) | 13 (20.3) | 12 (20.3) | 6 (10.3) | 32 (15.8) | 0.267 |
| Diabetes mellitus, n (%) | 22 (10.5) | 4 (6.5) | 6 (9.3) | 5 (8.5) | 1 (1.7) | 16 (7.8) | 0.414 |
| Malignancy, n (%) | 8 (3.8) | 0 (0) | 0 (0) | 1 (1.7) | 1 (1.7) | 4 (2) | 0.340 |
| Living in rural region, n (%) | 5 (2.4) | 1 (1.6) | 1 (1.6) | 1 (1.7) | 1 (1.7) | 2 (1) | 0.942 |
| Difficult access to healthcare, n (%) | 75 (35.7) | 18 (29.5) | 20 (31.3) | 15 (25.4) | 9 (15.5) | 37 (18.2) | 0.001 |
| Marital status | | | | | | | 0.065 |
| Single, n (%) | 40 (19) | 7 (11.5) | 11 (17.2) | 15 (25.4) | 14 (24.1) | 41 (20.2) | - |
| Married, n (%) | 159 (75.7) | 50 (81.9) | 45 (70.3) | 35 (59.3) | 43 (74.1) | 145 (71.4) | - |
| Divorced/Widowed, n (%) | 11 (5.2) | 4 (6.6) | 8 (12.5) | 9 (15.3) | 1 (1.7) | 17 (8.4) | - |
| Not reported, n (%) | 0 (0) | 0 (0) | 0 (0) | 0 (0) | 0 (0) | 0 (0) | - |
| Number of children, median (min-max) | 2 (0-6) | 2 (0-5) | 2 (0-4) | 2 (0-4) | 0.5 (0-3) | 2 (0-5) | <0.001a, b, c |
| Smoking status | | | | | | | 0.008 |
| Never, n (%) | 116 (55.2) | 25 (41) | 25 (39) | 38 (64.4) | 29 (50) | 120 (59.1) | - |
| Ex-smoker, n (%) | 35 (16.7) | 15 (24.6) | 11 (17.2) | 11 (18.6) | 14 (24.1) | 22 (10.8) | - |
| Active smoker, n (%) | 59 (28.1) | 21 (34.4) | 28 (43.8) | 10 (16.9) | 15 (25.9) | 61 (30) | - |
| Not reported, n (%) | 0 (0) | 0 (0) | 0 (0) | 0 (0) | 0 (0) | 0 (0) | - |
| Alcohol use | | | | | | | 0.001 |
| Never, n (%) | 176 (83.8) | 47 (77) | 53 (82.8) | 53 (89.8) | 34 (58.6) | 161 (79.3) | - |
| Socially, n (%) | 31 (14.8) | 12 (19.7) | 11 (17.2) | 6 (10.2) | 24 (41.4) | 39 (19.2) | - |
| Regularly, n (%) | 3 (1.4) | 2 (3.3) | 0 (0) | 0 (0) | 0 (0) | 3 (1.5) | - |

aBS vs. MS; p<0.05. bBS vs. HCs; p<0.05. cBS vs. AS; p<0.05. dBS vs. PsA; p<0.05, eAS vs. PsA; p<0.05, fPsA vs. IBD; p<0.05, gIBD vs. MS; p<0.05.



Supplementary Fig. S2. Correlation between total IFDFW and SES-C scores among all participants. SES-C: Socioeconomic status composite scale; IFDFW: InCharge financial distress/financial well-being scale.

Supplementary Table S7. Socioeconomic Status Composite (SES-C) scale items: distribution among males.

| | Behçet syndrome (BS), n=296 | Ankylosing spondilitis (AS), n=83 | Psoriatic arthritis (PsA), n=49 | Inflammatory bowel disease (IBD), n=81 | Multiple sclerosis (MS), n=36 | Healthy controls (HCs), n=199 | p-value |
|---|-----------------------------|-----------------------------------|---------------------------------|--|-------------------------------|-------------------------------|---------------|
| 1. Social status | | | | | | | |
| Poor, n (%) | 46 (15.5) | 7 (8.4) | 3 (6.1) | 9 (11.2) | 3 (8.4) | 13 (6.5) | 0.001 |
| Low-intermediate, n (%) | 197 (66.6) | 45 (54.2) | 39 (79.6) | 52 (64.2) | 24 (66.7) | 124 (62.3) | - |
| High-intermediate, n (%) | 52 (17.6) | 29 (35) | 7 (14.3) | 19 (23.4) | 8 (22.2) | 56 (28.1) | - |
| Wealthy, n (%) | 1 (0.3) | 1 (2.4) | 0 (0) | 0 (0) | 1 (2.7) | 6 (3) | - |
| N/A, n (%) | 0 (0) | 0 (0) | 0 (0) | 1 (1.2) | 0 (0) | 0 (0) | - |
| 2. IFDFW category | | | | | | | |
| Category 1, n (%) | 67 (22.6) | 11 (13.2) | 5 (10.2) | 11 (13.6) | 5 (13.9) | 26 (13.1) | 0.036 |
| Category 2, n (%) | 141 (47.6) | 33 (39.8) | 31 (63.3) | 40 (49.4) | 15 (41.7) | 91 (45.7) | - |
| Category 3, n (%) | 77 (26) | 36 (43.4) | 12 (24.5) | 28 (34.6) | 15 (41.7) | 74 (37.2) | - |
| Category 4, n (%) | 11 (3.7) | 3 (3.6) | 1 (2) | 1 (1.2) | 1 (2.8) | 8 (4) | - |
| N/A, n (%) | 0 (0) | 0 (0) | 0 (0) | 1 (1.2) | 0 (0) | 0 (0) | - |
| Total IFDFW score, mean ± SD | 41.22 ± 18.26 | 48.23 ± 17.69 | 40.63 ± 16.02 | 43.39 ± 16.03 | 48.61 ± 18.79 | 45.54 ± 17.18 | 0.002a, b, c |
| 3. Having debt, n (%) | | | | | | | |
| | 100 (33.8) | 32 (38.6) | 17 (34.7) | 28 (34.6) | 17 (47.2) | 84 (42.2) | 0.358 |
| 4. Monthly income level | | | | | | | |
| No income, n (%) | 8 (2.7) | 0 (0) | 2 (4) | 0 (0) | 0 (0) | 4 (2) | 0.047 |
| Low, n (%) | 108 (36.5) | 20 (24) | 16 (32.7) | 29 (35.8) | 8 (22.2) | 58 (29.1) | - |
| Moderate, n (%) | 175 (59.1) | 56 (67.5) | 31 (63.3) | 49 (60.5) | 26 (72.2) | 130 (65.3) | - |
| High, n (%) | 5 (1.7) | 7 (8.4) | 0 (0) | 2 (2.5) | 2 (5.6) | 7 (3.5) | - |
| N/A, n (%) | 0 (0) | 0 (0) | 0 (0) | 1 (1.2) | 0 (0) | 0 (0) | - |
| 5. Being employed in a job, n (%) | | | | | | | |
| | 215 (72.6) | 69 (83.1) | 43 (87.8) | 59 (72.8) | 24 (66.7) | 159 (79.9) | 0.042 |
| 6. Receiving financial aid from others | | | | | | | |
| Regularly, n (%) | 46 (15.5) | 4 (4.8) | 3 (6.1) | 5 (6.2) | 0 (0) | 5 (2.5) | <0.001 |
| Sometimes, n (%) | 25 (8.4) | 8 (9.6) | 7 (14.3) | 11 (13.6) | 9 (25) | 38 (19) | - |
| Never, n (%) | 224 (75.7) | 71 (85.5) | 39 (79.6) | 64 (79) | 27 (75) | 156 (78.4) | - |
| N/A, n (%) | 1 (0.3) | 0 (0) | 0 (0) | 1 (1.2) | 0 (0) | 0 (0) | - |
| 7. Crowding index (person/room) categories | | | | | | | |
| >3, n (%) | 3 (1) | 0 (0) | 0 (0) | 0 (0) | 0 (0) | 1 (0.5) | 0.630 |
| 1.51-3, n (%) | 48 (16.2) | 8 (9.6) | 9 (18.4) | 13 (16) | 5 (13.9) | 15 (7.5) | - |
| 1.1-1.5, n (%) | 91 (30.7) | 24 (28.9) | 14 (28.6) | 22 (27.2) | 10 (27.8) | 56 (28.1) | - |
| 0.51-1, n (%) | 129 (43.6) | 43 (51.8) | 22 (44.9) | 38 (46.9) | 16 (44.4) | 103 (51.8) | - |
| 0-0.5, n (%) | 24 (8.1) | 7 (8.4) | 4 (8.1) | 7 (8.6) | 5 (13.9) | 24 (12) | - |
| N/A, n (%) | 1 (0.3) | 1 (1.2) | 0 (0) | 1 (1.2) | 0 (0) | 0 (0) | - |
| 8. The educational level of the head of the family | | | | | | | |
| Illiterate, n (%) | 6 (2) | 0 (0) | 2 (4) | 4 (4.9) | 0 (0) | 2 (1) | <0.001 |
| Primary, middle or high school, n (%) | 240 (81) | 51 (61.4) | 36 (73.5) | 55 (67.9) | 20 (55.6) | 129 (64.8) | - |
| University, n (%) | 49 (16.6) | 32 (38.6) | 11 (22.4) | 21 (25.9) | 16 (44.4) | 68 (34.2) | - |
| N/A, n (%) | 1 (0.3) | 0 (0) | 0 (0) | 1 (1.2) | 0 (0) | 0 (0) | - |
| 9. Participant's educational level | | | | | | | |
| Illiterate, n (%) | 2 (0.7) | 0 (0) | 0 (0) | 2 (2.4) | 0 (0) | 0 (0) | <0.001 |
| Primary, middle or high school, n (%) | 228 (77) | 48 (57.8) | 33 (67.3) | 45 (55.6) | 14 (38.9) | 111 (55.8) | - |
| University, n (%) | 65 (21.9) | 35 (42.1) | 16 (32.6) | 33 (40.7) | 22 (61.1) | 88 (44.2) | - |
| N/A, n (%) | 1 (0.3) | 0 (0) | 0 (0) | 1 (1.2) | 0 (0) | 0 (0) | - |
| 10. The head of the family having a job, n (%) | | | | | | | |
| | 204 (68.9) | 71 (85.5) | 39 (79.6) | 60 (74) | 27 (75) | 139 (69.8) | 0.050 |
| Total SES-C score, mea ± SD | 17.91 ± 3.16 | 19.75 ± 2.90 | 18.53 ± 2.60 | 18.73 ± 3.01 | 19.64 ± 3.60 | 19.42 ± 2.72 | <0.001a, b, c |
| SES-C category | | | | | | | |
| Very low, n (%) | 3 (1) | 0 (0) | 0 (0) | 0 (0) | 0 (0) | 0 (0) | <0.001 |
| Low, n (%) | 92 (31) | 10 (12) | 7 (14.3) | 20 (24.7) | 7 (19.4) | 27 (13.6) | - |
| Moderate, n (%) | 176 (59.5) | 59 (71) | 39 (79.6) | 52 (64.2) | 20 (55.6) | 142 (71.4) | - |
| High, n (%) | 24 (8.1) | 14 (16.9) | 3 (6.1) | 8 (9.9) | 9 (25) | 30 (15) | - |
| Not reported, n (%) | 1 (0.3) | 0 (0) | 0 (0) | 1 (1.2) | 0 (0) | 0 (0) | - |

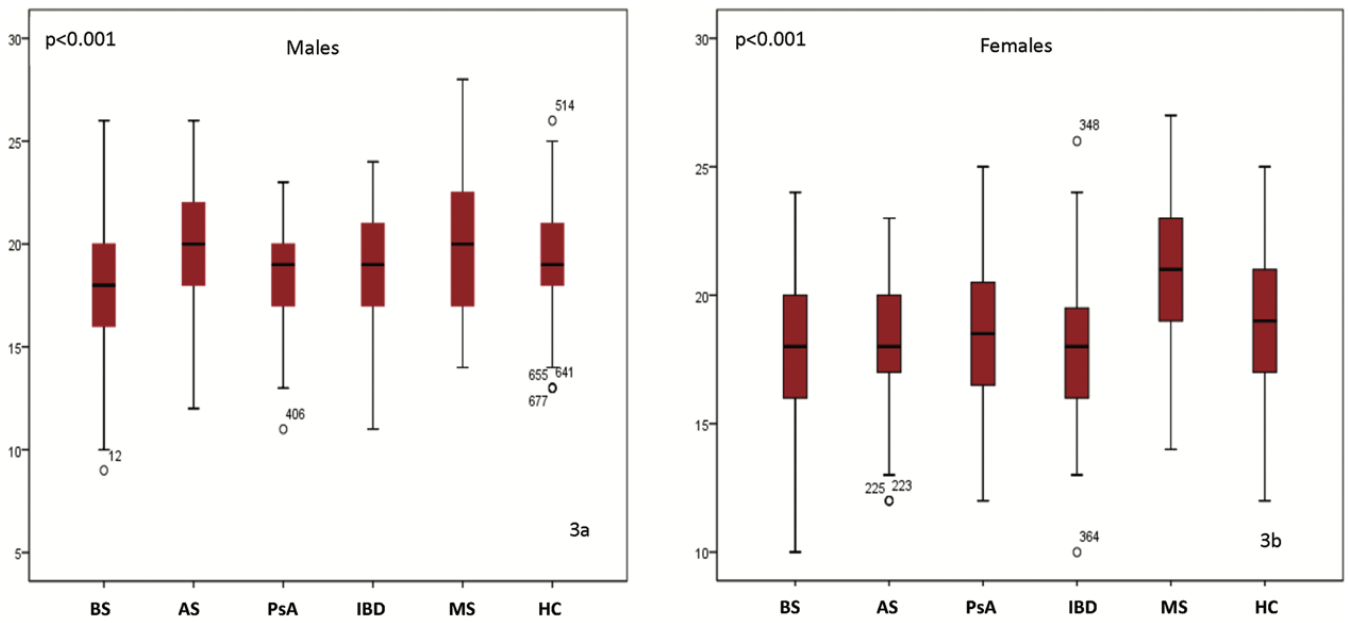
IFDFW: Incharge Financial Distress/Financial Well-being scale; SES-C: Socioeconomic Status Composite scale. aBS vs. HCs; p<0.05, bBS vs. MS; p<0.05, cBS vs. AS; p<0.05. N/A; not applicable.

Supplementary Table S8. Socioeconomic Status Composite scale (SES-C) items: distribution among females.

| | Behçet syndrome (BS), n=210 | Ankylosing spondylitis (AS), n=61 | Psoriatic arthritis (PsA), n=64 | Inflammatory bowel disease (IBD), n=59 | Multiple sclerosis (MS), n=58 | Healthy controls (HCs), n=203 | p-value |
|---|-----------------------------|-----------------------------------|---------------------------------|--|-------------------------------|-------------------------------|------------------------------|
| Social status | | | | | | | 0.002 |
| Poor, n (%) | 16 (7.6) | 6 (9.8) | 2 (3.1) | 4 (6.8) | 2 (3.4) | 14 (7) | - |
| Low-intermediate, n (%) | 152 (72.4) | 46 (75.4) | 46 (71.9) | 44 (74.6) | 27 (46.6) | 122 (60) | - |
| High-intermediate, n (%) | 41 (19.5) | 9 (14.8) | 15 (23.4) | 11 (18.6) | 27 (46.6) | 63 (31) | - |
| Wealthy, n (%) | 1 (0.4) | 0 (0) | 1 (1.5) | 0 (0) | 2 (3.4) | 4 (2) | - |
| N/A, n (%) | 0 (0) | 0 (0) | 0 (0) | 0 (0) | 0 (0) | 0 (0) | - |
| IFDFW category | | | | | | | <0.001 |
| Category 1, n (%) | 57 (27.1) | 11 (18) | 12 (18.8) | 13 (22) | 3 (5.2) | 31 (15.3) | - |
| Category 2, n (%) | 100 (47.6) | 33 (54) | 29 (45.3) | 32 (54.2) | 19 (32.8) | 109 (53.7) | - |
| Category 3, n (%) | 50 (23.8) | 15 (24.6) | 20 (31.3) | 13 (22) | 34 (58.6) | 60 (29.6) | - |
| Category 4, n (%) | 3 (1.4) | 2 (3.3) | 3 (4.6) | 1 (1.7) | 2 (3.4) | 3 (1.4) | - |
| N/A, n (%) | 0 (0) | 0 (0) | 0 (0) | 0 (0) | 0 (0) | 0 (0) | - |
| Total IFDFW score, mean±SD | 38.21 ± 17.15 | 41.18 ± 17.05 | 43.34 ± 19.08 | 38.58 ± 16.43 | 52.53 ± 16.38 | 42.78 ± 15.82 | <0.001a, b, c, d, e, f |
| Having debt, n (%) | 78 (37.1) | 22 (36) | 32 (50) | 23 (38.9) | 33 (56.9) | 92 (45.3) | 0.055 |
| Monthly income level | | | | | | | 0.053 |
| No income, n (%) | 1 (0.4) | 0 (0) | 1 (1.6) | 1 (1.7) | 0 (0) | 2 (1) | - |
| Low, n (%) | 83 (39.5) | 17 (27.8) | 18 (28.1) | 19 (32.2) | 10 (17.2) | 51 (25.1) | - |
| Moderate, n (%) | 123 (58.6) | 43 (70.5) | 41 (64) | 38 (64.4) | 44 (75.9) | 141 (69.5) | - |
| High, n (%) | 3 (1.4) | 1 (1.6) | 4 (6.2) | 1 (1.7) | 4 (6.9) | 9 (4.4) | - |
| N/A, n (%) | 0 (0) | 0 (0) | 0 (0) | 0 (0) | 0 (0) | 0 (0) | - |
| Being employed in a job, n (%) | 66 (31.4) | 18 (29.5) | 22 (34.3) | 15 (25.4) | 26 (44.8) | 93 (45.8) | 0.006 |
| Receiving financial aid from others | | | | | | | 0.086 |
| Regularly, n (%) | 23 (10.9) | 6 (9.8) | 1 (1.5) | 3 (5) | 1 (1.7) | 9 (4.4) | - |
| Sometimes, n (%) | 20 (9.5) | 6 (9.8) | 8 (12.5) | 8 (13.5) | 9 (15.5) | 19 (9.4) | - |
| Never, n (%) | 167 (79.5) | 49 (80.3) | 55 (85.9) | 48 (81.4) | 48 (82.8) | 175 (86.2) | - |
| N/A, n (%) | 0 (0) | 0 (0) | 0 (0) | 0 (0) | 0 (0) | 0 (0) | - |
| Crowding index (person/room) categories | | | | | | | 0.086 |
| >3, n (%) | 0 (0) | 0 (0) | 0 (0) | 0 (0) | 0 (0) | 0 (0) | - |
| 1.51-3, n (%) | 31 (14.8) | 5 (8.2) | 4 (6.2) | 8 (13.6) | 2 (3.4) | 16 (7.9) | - |
| 1.1-1.5, n (%) | 58 (27.6) | 17 (27.9) | 24 (37.5) | 12 (20.3) | 9 (15.5) | 58 (28.6) | - |
| 0.51-1, n (%) | 101 (48) | 33 (54) | 27 (42.2) | 31 (52.5) | 39 (67.2) | 108 (53.2) | - |
| 0-0.5, n (%) | 20 (9.5) | 6 (9.8) | 9 (14) | 8 (13.6) | 8 (13.8) | 21 (10.3) | - |
| N/A, n (%) | 0 (0) | 0 (0) | 0 (0) | 0 (0) | 0 (0) | 0 (0) | - |
| The educational level of the head of the family | | | | | | | <0.001 |
| Illiterate, n (%) | 5 (2.4) | 0 (0) | 1 (1.5) | 0 (0) | 0 (0) | 3 (1.5) | - |
| School, n (%) | 171 (81.4) | 47 (77) | 44 (68.8) | 46 (78) | 30 (51.7) | 132 (65) | - |
| University, n (%) | 34 (16.2) | 14 (23) | 19 (29.7) | 13 (22) | 28 (48.3) | 68 (33.5) | - |
| N/A, n (%) | 0 (0) | 0 (0) | 0 (0) | 0 (0) | 0 (0) | 0 (0) | - |
| Participant's educational level | | | | | | | <0.001 |
| Illiterate, n (%) | 10 (4.8) | 0 (0) | 3 (4.6) | 2 (3.4) | 0 (0) | 5 (2.4) | - |
| School, n (%) | 154 (73.3) | 43 (70.5) | 48 (75) | 40 (67.8) | 24 (41.4) | 112 (55.2) | - |
| University, n (%) | 46 (21.9) | 18 (29.5) | 13 (20.3) | 17 (28.8) | 34 (58.6) | 86 (42.4) | - |
| N/A, n (%) | 0 (0) | 0 (0) | 0 (0) | 0 (0) | 0 (0) | 0 (0) | - |
| The head of the family having a job, n (%) | 133 (63.3) | 46 (75.4) | 49 (76.6) | 37 (62.7) | 44 (75.9) | 149 (73.4) | 0.071 |
| SES-C score, mean±SD | 17.57 ± 2.69 | 18.21 ± 2.7 | 18.73 ± 2.85 | 17.98 ± 2.7 | 20.57 ± 2.67 | 19 ± 2.6 | <0.001a, b, c, d, e, f, g, h |
| SES-C category | | | | | | | <0.001 |
| Very low, n (%) | 1 (0.4) | 0 (0) | 0 (0) | 1 (1.7) | 0 (0) | 0 (0) | - |
| Low, n (%) | 75 (35.7) | 13 (21.3) | 17 (26.6) | 15 (25.4) | 4 (6.9) | 36 (17.7) | - |
| Moderate, n (%) | 130 (61.9) | 44 (72.1) | 39 (60.9) | 40 (67.8) | 38 (65.5) | 148 (72.9) | - |
| High, n (%) | 4 (1.9) | 4 (6.6) | 8 (12.5) | 3 (5) | 16 (27.6) | 19 (9.4) | - |
| Not reported, n (%) | 0 (0) | 0 (0) | 0 (0) | 0 (0) | 0 (0) | 0 (0) | - |

IFDFW: Incharge Financial Distress/Financial Well-being scale; SES-C: Socioeconomic Status Composite scale.

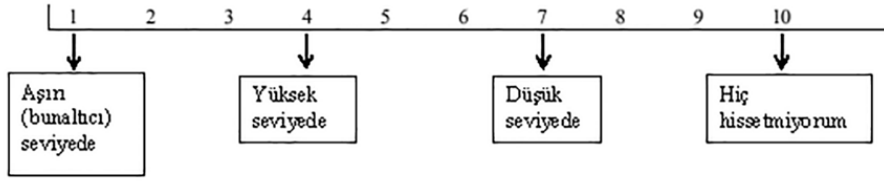
aBS vs. MS; p<0.05, bBS vs. HCs; p<0.05, cIBD vs. MS; p<0.05, dAS vs. MS; p<0.05, ePsA vs. MS; p<0.05, fMS vs. HCs; p<0.05, gBS vs. PsA; p<0.05, hIBD vs. HCs; p<0.05. N/A; not applicable.



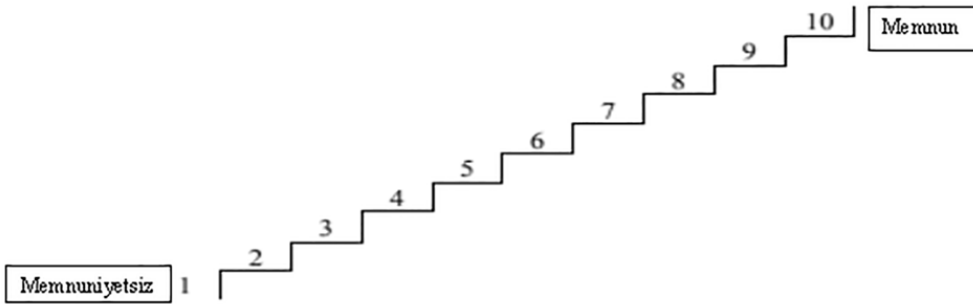
Supplementary Fig. S3. Socioeconomic status composite scale (SES-C) scores: Distribution across study groups. SES-C: Socioeconomic status composite scale; BS: Behçet's syndrome; AS: ankylosing spondylitis; PsA: psoriatic arthritis; IBD: inflammatory bowel disease; MS: multiple sclerosis; HC: healthy controls.

Turkish versions of IFDFW and SES-C scales
MALİ SIKINTI/FİNANSAL REFAH ÖLÇEĞİ (IFDFW)

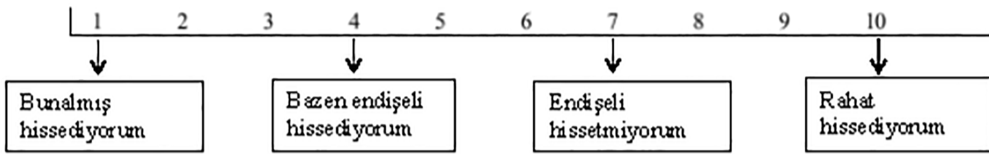
1. Bugün maddi sıkıntınızı ne seviyede hissetmektedirsiniz?



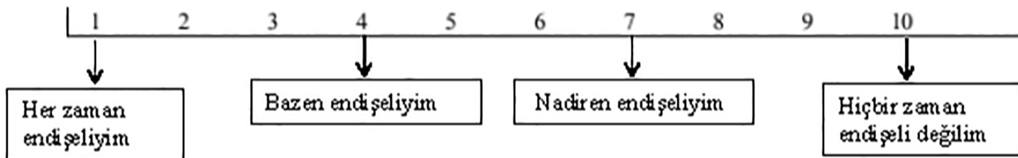
2. Aşağıdaki merdiven basamaklarından şu anki maddi durumunuzdan ne kadar memnunsanız o basamağı işaretleyiniz (çember içine alarak). En alttaki "1" basamağı durumunuzdan hiç memnun olmadığınız anlamına gelirken en tepedeki "10" basamağı tam memnun olduğunuz anlamına gelir. Durumunuzdan ne kadar memnun değilseniz o kadar küçük bir numarayla çember içine almazsınız. Ne kadar memnunsanız o kadar büyük bir numarayla çember içine almazsınız.



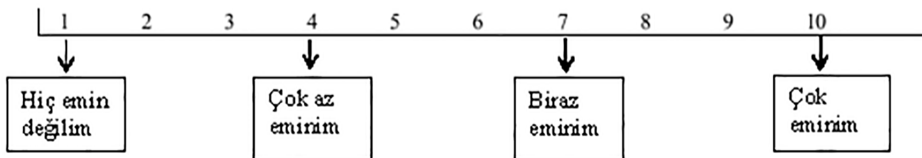
3. Şu anki maddi durumunuz hakkında nasıl hissediyorsunuz?



4. Genelde aylık yaşam masraflarınızı karşılayabilmek konusunda ne sıklıkla endişeleniyorsunuz?



5. Maliyeti yaklaşık 10.000 TL olan bir acil durum için ödeme yapacak parayı bulabileceğinizden ne kadar eminsiniz?



6. Dışarıda yemek yemek, sinemaya gitmekveya başka bir şey yapmak isteyip de paranız yetmediği için gitmediğiniz bir durumla ne sıklıkla karşılaşıyorsunuz?

| | | | | | | | | | |
|-----------|---|---|-------|---|---|---------|---|---|-----|
| 1 | 2 | 3 | 4 | 5 | 6 | 7 | 8 | 9 | 10 |
| ↓ | | | ↓ | | | ↓ | | | ↓ |
| Her zaman | | | Bazen | | | Nadiren | | | Hiç |

7. Kendinizi ne sıklıkla mali açılardan anca geçinip, ay sonunu zar zor getiriyor gibi hissediyorsunuz?

| | | | | | | | | | |
|-----------|---|---|-------|---|---|---------|---|---|-----|
| 1 | 2 | 3 | 4 | 5 | 6 | 7 | 8 | 9 | 10 |
| ↓ | | | ↓ | | | ↓ | | | ↓ |
| Her zaman | | | Bazen | | | Nadiren | | | Hiç |

8. Genel olarak kişisel maddi durumunuzla ilgili ne kadar stresli hissediyorsunuz?

| | | | | | | | | | |
|-------------------------|---|---|--------------|---|---|-------------|---|---|---------------|
| 1 | 2 | 3 | 4 | 5 | 6 | 7 | 8 | 9 | 10 |
| ↓ | | | ↓ | | | ↓ | | | ↓ |
| Aşırı (bunaltıcı) stres | | | Yüksek stres | | | Düşük stres | | | Hiç stres yok |

1. Kategori: 8-25 puan
2. Kategori: 26-50 puan
3. Kategori: 51-75 puan
4. Kategori: 76-80 puan

SOSYOEKONOMİK DURUM BİLEŞİK ÖLÇEĞİ (SES-C)

1. Hangi sosyal sınıfta olduğunuzu düşünüyorsunuz? (Aşağıdakilerden birini işaretleyiniz)

1) Fakir, 2) Düşük-Orta, 3) Yüksek-Orta, 4) Varlıklı

2. Mali Sıkıntı/Finansal refah ölçeği (IFDFW) kategorisi (8-25: 1, 26-50: 2, 51-75: 3, >75: 4 puan)

3. Borcunuz var mı? (Aşağıdakilerden birini işaretleyiniz)

0) Evet, 1) Hayır

4. Hanenize aylık olarak giren gelir düzeyini işaretleyiniz.

1) Hiç gelir yok, 2) Düşük gelir, 3) Orta gelir, 4) Yüksek gelir

5. Bir işte çalışıyor musunuz? (Aşağıdakilerden birini işaretleyiniz)

0) Evet, 1) Hayır

6. Başkalarından maddi yardım alıyor musunuz? (Aşağıdakilerden birini işaretleyiniz)

0) Düzenli olarak alıyorum, 1) Bazen alıyorum, 2) Hiç almıyorum

7. A) Evinizde kaç kişi kalıyorsunuz? (Lütfen boşluğa yazın):

B) Evinizde toplam kaç oda bulunuyor? (Lütfen boşluğa yazın):

Kalabalık indeksi (>3: 1, 1.51-3: 2, 1.1-1.5: 3, 0.51-1: 4, 0-0.5: 5 kişi/oda)

8. Aile reisinin eğitim düzeyi nedir? (Aşağıdakilerden birini işaretleyiniz)

1) Okuma yazma bilmiyor, 2) Okul (ilkokul/ortaokul/lise), 3) Üniversite

9. Eğitim düzeyiniz nedir? (Aşağıdakilerden birini işaretleyiniz)

1) Okuma yazma bilmiyor, 2) Okul (ilkokul/ortaokul/lise), 3) Üniversite

10. Aile reisinin çalışma durumu nedir? (Aşağıdakilerden birini işaretleyiniz)

0) Çalışmıyor, 1) Çalışıyor

Puan: Çok düşük: 6-10, Düşük: 11-16, Ortalama: 17-22, Yüksek: 23-28