

Subcutaneous calcifications in a patient with diffuse scleroderma

T.E. Markatseli, P.V. Voulgari

Rheumatology Clinic, Department of Internal Medicine, Medical School, University of Ioannina, Ioannina, Greece.

*Theodora E. Markatseli, MD, Fellow in Rheumatology
Paraskevi V. Voulgari, MD, Assoc. Prof. of Rheumatology*

Please address correspondence to:

*Paraskevi V. Voulgari, MD,
Rheumatology Clinic,
Department of Internal Medicine,
Medical School,
University of Ioannina,
45110 Ioannina, Greece.*

*E-mail: pvoulgar@cc.uoi.gr
www.rheumatology.gr*

Received on March 14, 2013; accepted in revised form on April 17, 2013.

Clin Exp Rheumatol 2013; 31 (Suppl. 76): S180.

© Copyright CLINICAL AND EXPERIMENTAL RHEUMATOLOGY 2013.

Key words: scleroderma, imaging

Competing interests: none declared.

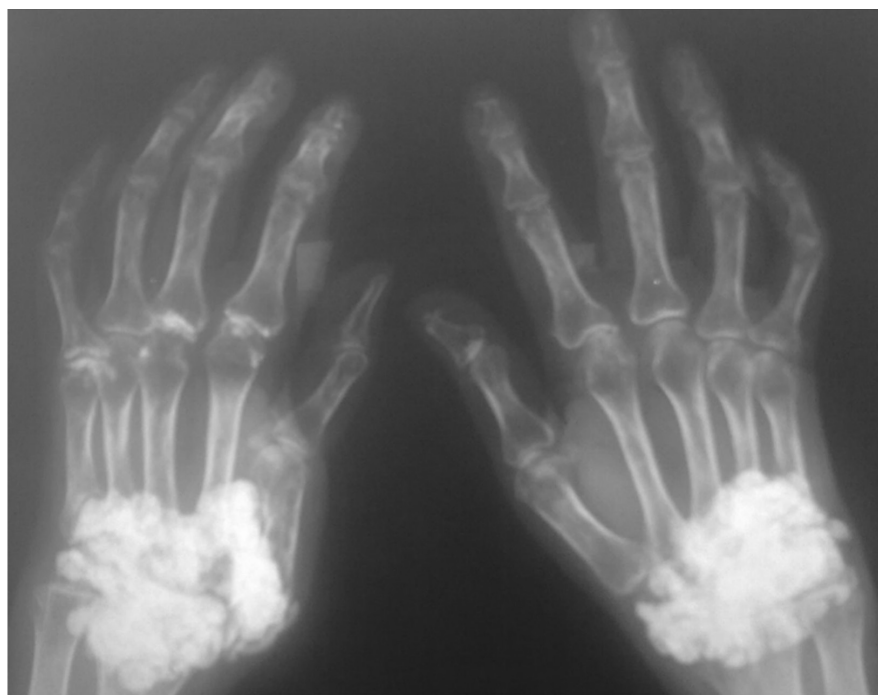


Fig. 1.

A 56-year-old female patient with systemic sclerosis presented with bilateral subcutaneous calcium deposits on her wrists, revealed by x-rays. Trauma and/or ischaemia may be implicated

in their pathogenesis. Treatment with diltiazem, colchicine, warfarin, biphosphonates, intravenous immunoglobulin and rituximab has shown variable results.